



An ISO 9001/14001/18001 & Green Office Certified Company



60 Years of Customer Satisfaction

Power & Energy



Chemicals &
Petrochemicals



Oil & Gas



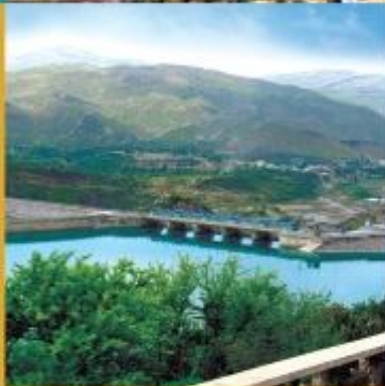
Environmental



HRL
HABIB RAFIQ (PVT.) LTD.



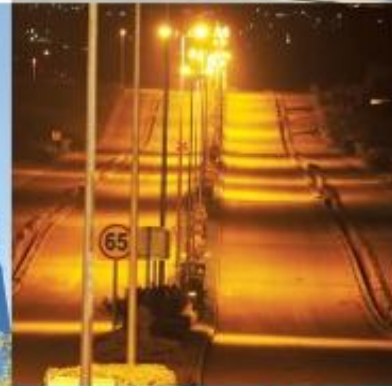
Airports & Aviation



Water Resources
Engineering



Buildings



Roads, Housing
& Infrastructure

Contents

Worldwide Presence _____

MD's Message _____

Introduction _____

Our Mission _____

Company Structure _____

Our Planning _____

Quality Policy _____

Areas of Certification _____

Design Associate _____

Berkeley Associates _____

Areas of Operation _____

Power & Energy

Chemicals & Petrochemicals

Oil & Gas

Environmental

Airports & Aviation

Water Resources Engineering

Buildings

Roads, Housing & Infrastructure

Our Clients _____

1

2

3

4

5

6

7

9

11

12

13

15

33

39

43

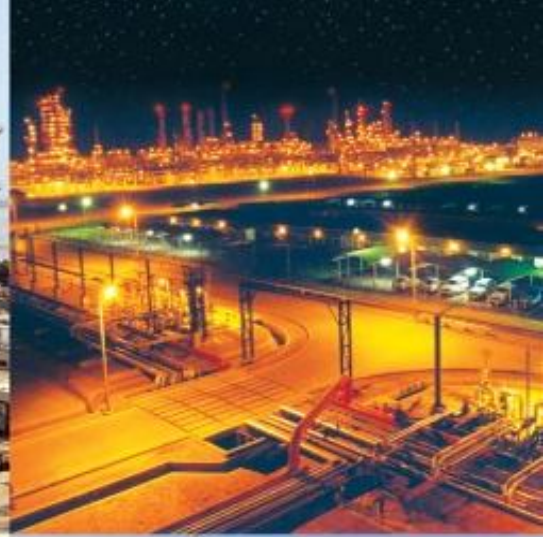
47

49

53

71

85



Worldwide Presence



 PAKISTAN  SAUDI ARABIA  UAE  QATAR

MD's Message



HRL, once a dream has shaped into an absolute reality. This has taken an enduring 60 years of conviction and untiring efforts to see it grow into a group with one of the biggest market clientele within Pakistan and abroad. The company has seen transformation from the conventional to state of the art and highly demanding mechanized construction.

It is an era of scientific achievements where hearts and minds are controlled by the machines. Yet, we stand tall to maintain our composure through dedicated services to our clients and winning their love and satisfaction. Needless to say it makes us feel very relaxed and proud.

HRL has always been on the forefront to take up the jobs and assignments with a cause and service to humanity integrated with innovation and global outlook. Today we are humbled by our achievements in Industrial, Power, Oil & Gas, Infrastructure, High rise Buildings, Environmental, Irrigation and Aviation fields. The hallmark of these efforts is completion of all the projects ahead of agreed time frames.

I have always been a strong believer in faith and expect our next generation and the generations after to strive positively in the direction of modernization and expansion with the primary focus on hard work.

HRL looks forward towards betterment, helpfulness and progress with a tool of exploring nature and the hidden engineering treasures in it, to make it a better world.

Habib Ahmad
Managing Director

Habib Rafiq (Pvt.) Ltd.



Habib Rafiq (Pvt.) Limited has come a long way to symbolize commitment, distinction and professional excellence by meeting the stringent, demanding and extra ordinary work requirements of the client. HRL has undertaken prestigious projects of high engineering, national and international importance involving civil, mechanical and electrical works for the last 60 years.

The company has been working in Aviation, Infrastructure, Housing, Design and Environmental areas other than its strong standing in industrial projects for Power, Chemicals, Petro Chemicals, Roads, Motorways, Buildings, Oil & Gas sectors.

By virtue of its efficient and quality performance, HRL has won the trust and confidence of its clients. HRL now enjoys the reputation of being a trend setter in the ever expanding arena of housing and infrastructure in the last 15 years and has earned the biggest name in real estate development of housing and infrastructure, construction of power houses viz-a-viz other disciplines.

HRL having extended its performance abroad and has been successful in maintaining the balance and secure jobs of high engineering and financial value. Today we stand tall and firm over the strong foundation of reputation and trust with a high value and numbers of human and electromechanical resources which gave us a distinctive edge over the competitors in the market.

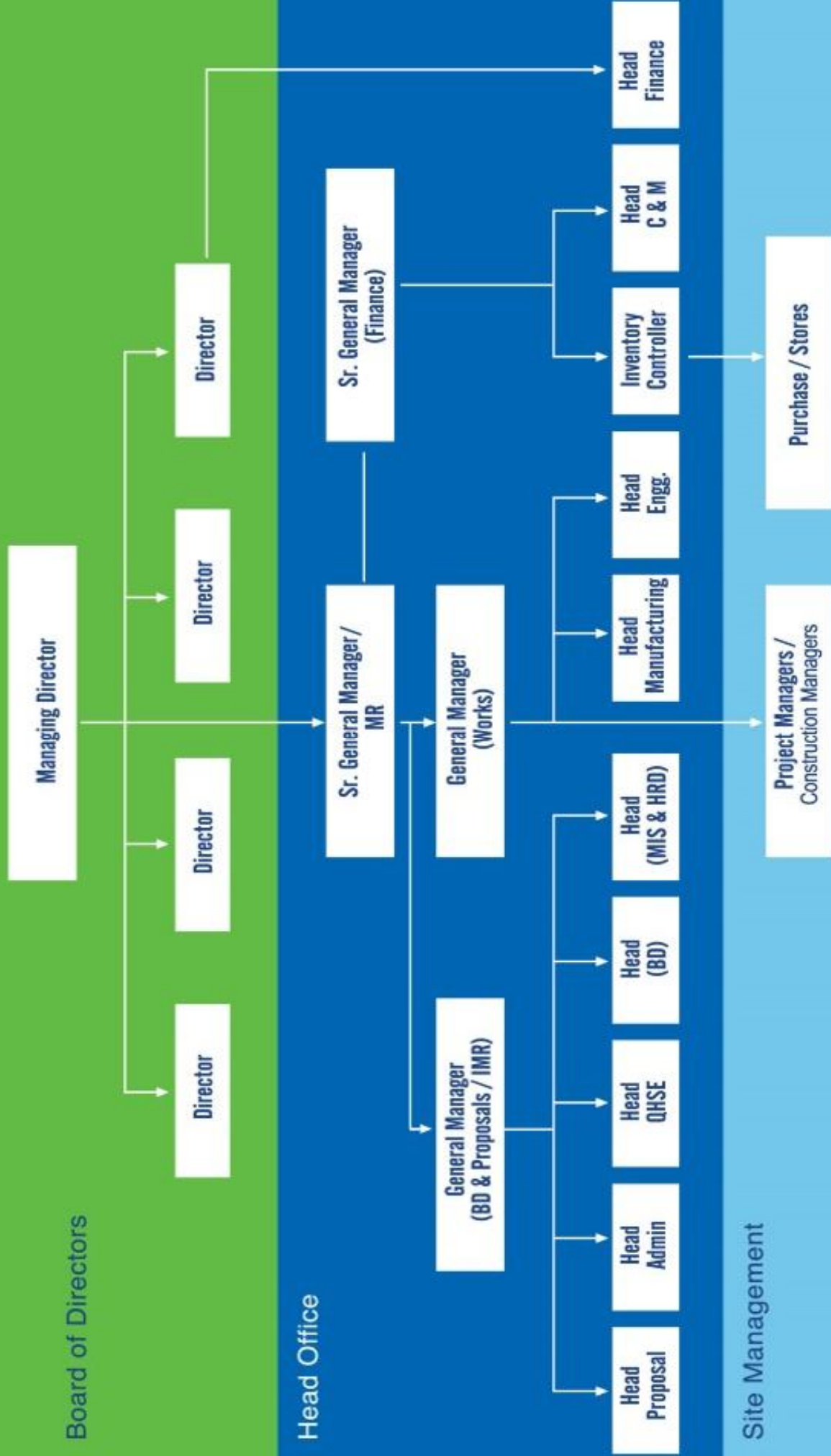


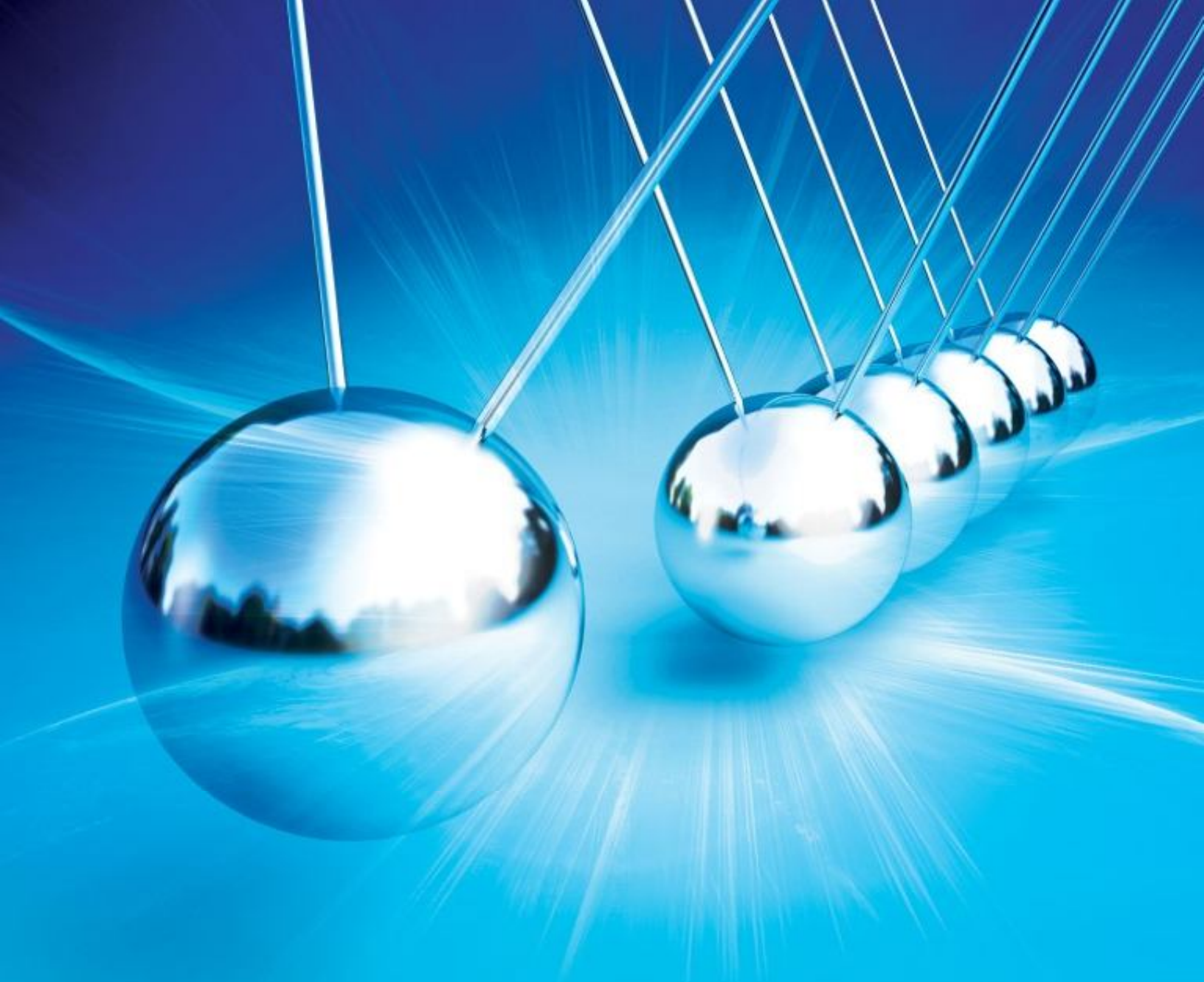
OUR MISSION

Our mission is to achieve high standing for HRL, so that we;

- Remain an undisputed leader in engineering, the arena of construction and project management
- Provide professional services and solutions to our client
- Stay profitable in growth

Company Structure





Our Planning

“**Quality** Construction,
Within **Budget**,
On **Time**”

Quality Policy



Quality Policy

"To serve our clients and maintain our position as leader in our areas of operation."

We intend to achieve this goal by:

- Understanding that quality means complete conformance to the agreed customer requirements and standards.
- Understanding that quality is everybody's direct responsibility
- Putting our best effort every time for in-time completion of jobs, never compromising on quality and safety
- Continuous improvement in skills and know how through practical experience and training of the employees.
- Operating all our places in a safe and healthy environment.
- We must all be dedicated to this mission. Our reputation depends on all of us working as a team to satisfy and retain the single most important person in business, which is our "Client"

HSE Policy

Health & Safety Policy

HRL Management will carry out its activities in a manner that assures **Safety, Health and Security** for its employees and avoid damages to Company assets. HRL is committed to:

- Instill and promote Safety consciousness amongst employees, sub-contractors and business partners to prevent and minimize accidents, injuries and occupational illnesses.
- Continually improve our Safety practices.

Adherence to our health, safety program is to achieve
ZERO Accidents
ZERO Injuries
& Zero Property Damages



Environmental Policy

We at HRL are fully committed to:

- Greener and cleaner environment for all.
- Prevention of pollution in all areas of our operation.
- Keeping ourselves aware of and compliant with all applicable statutory regulations.
- Adherence to our environmental program is to achieve **"Greener and Cleaner Environment"**



Areas of Certification

HRL was certified as ISO 9001, 14001 by AIB-VINCOTTE, belgium in April 1999 and OHSAS in the following areas:
“A project management company providing engineering, procurement, civil construction, mechanical fabrication/erection and E & I installation services. This also includes plant commissioning, maintenance, operation and turnaround

HRL's approach to Quality, Health, Safety and Environment is fully supported by entire organizational structure and true implementation/adherence at all levels. In other words we have respect for our clients, employees and Mother Nature.



CERTIFICATE

Management system as per
EN ISO 14001:2004

In accordance with TÜV AUSTRIA CERT procedures, it is hereby certified that

HRL
HABIB RAFIQ (PVT.) LTD.

HABIB RAFIQ PVT. LIMITED
6-K, Block H, Gulberg II, Lahore,
Pakistan

applies a management system in line with the above standard for the
following scope:

product management, engineering procurement, civil construction,
mechanical fabrication and erection and E & I installation services, plant
commissioning, maintenance, operation and turn around

Valid until 2018

Certificate Registration No. 30 104 13134/980

Vienna, 2015

Xorof

Certification Body
at TÜV AUSTRIA CERT GmbH

This certification was conducted in accordance with TÜV AUSTRIA CERT auditing and certification
procedures and is subject to regular surveillance audits.
TÜV AUSTRIA CERT GmbH, Rugelstraße 18, A-1015 Wien, www.tuv.at



AIB-VINÇOTTE International Ltd
Brussels, Belgium

Quality Management System Certificate

EN ISO 9001 : 2000

This is to certify that
located at

HABIB RAFIQ (Pvt.) Ltd.
6-K, Block-6, Gulberg-II
LAHORE (Pakistan)

has established and is maintaining a quality system which is in accordance with the
requirements of EN ISO 9001 : 2000 "Quality Management System" for :

Project Management including Engineering, Procurement, Civil, Construction,
Mechanical, Fabrication and Erection and E&I, Installation services including
Plant Construction, Maintenance, Operation and Turnarounds.

Further clarifications regarding the scope of this certificate and the applicability of
EN ISO 9001 : 2000 requirements may be obtained by consulting the organization

This certificate is based on the result of a quality audit documented in the audit report
no. UAE/078/C/0503.

This certificate is granted subject to AIB-VINÇOTTE International's General
Regulations.

Certificate number : 99 1207a
First issued : April 13, 1999

Date of issue : June 2, 2003

This certificate expires on : June 1, 2006

Signed for the certification body :

Xorof

W. P. OLIVIER
Chairman Certification Committee



CERTIFICATE

Management system as per
EN ISO 9001:2008

In accordance with TÜV AUSTRIA CERT procedures, it is hereby certified that

HRL
HABIB RAFIQ (PVT.) LTD.

HABIB RAFIQ PVT. LIMITED
6-K, Block H, Gulberg II, Lahore,
Pakistan

applies a management system in line with the above standard for the
following scope:

product management, engineering procurement, civil construction,
mechanical fabrication and erection and E & I installation services, plant
commissioning, maintenance, operation and turn around

Valid until 2015

Certificate Registration No. 30 106 13 134/078

Vienna, 2015

Xorof

Certification Body
at TÜV AUSTRIA CERT GmbH

This certification was conducted in accordance with TÜV AUSTRIA CERT auditing and certification
procedures and is subject to regular surveillance audits.
TÜV AUSTRIA CERT GmbH, Rugelstraße 18, A-1015 Wien, www.tuv.at



CERTIFICATE

Management system as per
EN ISO 18001:2007

In accordance with TÜV AUSTRIA CERT procedures, it is hereby certified that

HRL
HABIB RAFIQ (PVT.) LTD.

HABIB RAFIQ PVT. LIMITED
6-K, Block H, Gulberg II, Lahore,
Pakistan

applies a management system in line with the above standard for the
following scope:

product management, engineering procurement, civil construction,
mechanical fabrication and erection and E & I installation services,
plant commissioning, maintenance, operation and turn around

Valid until 2018

Certificate Registration No. 30 116 13134/079

Vienna, 2015

Xorof

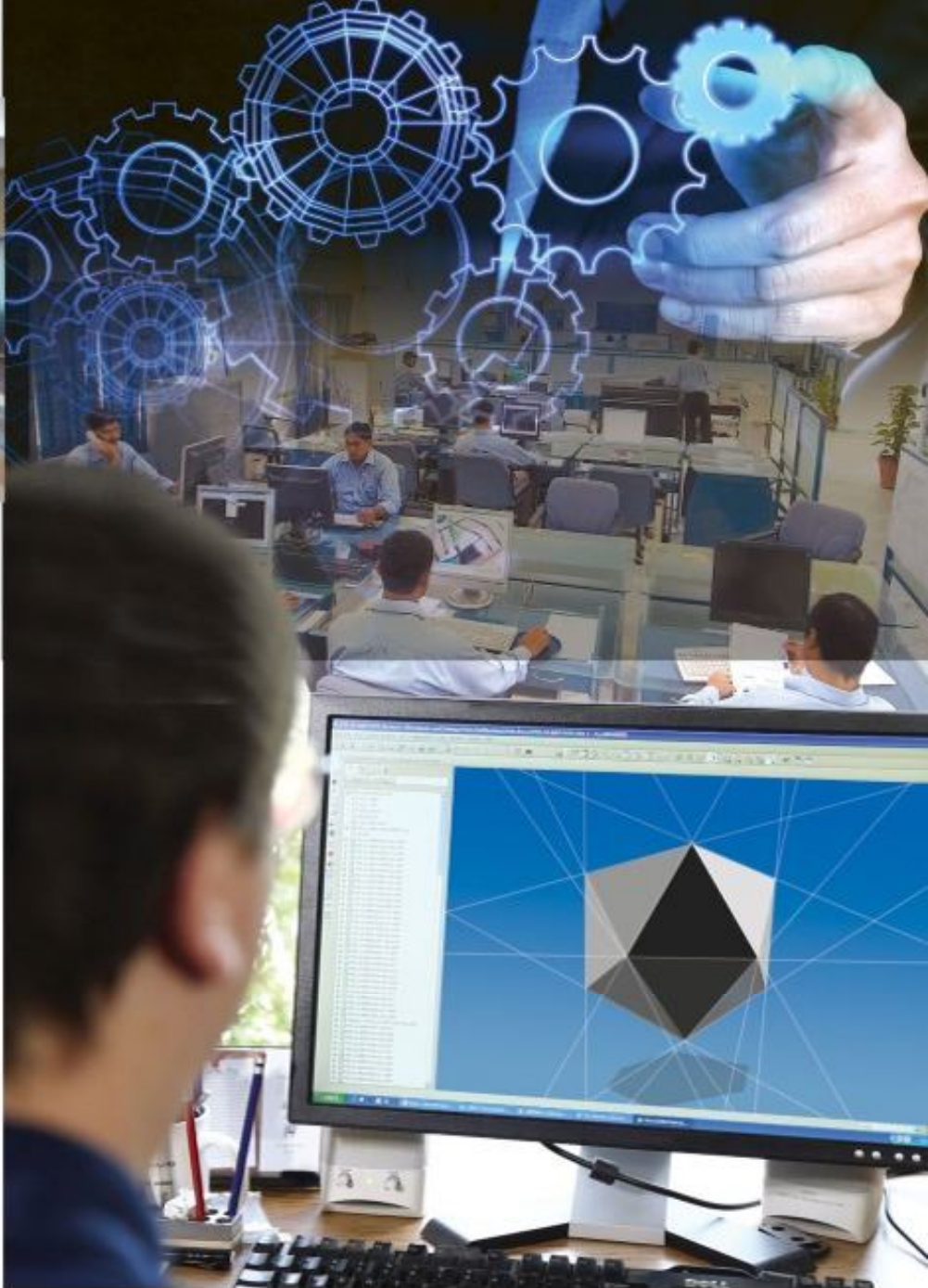
Certification Body
at TÜV AUSTRIA CERT GmbH

This certification was conducted in accordance with TÜV AUSTRIA CERT auditing and certification
procedures and is subject to regular surveillance audits.
TÜV AUSTRIA CERT GmbH, Rugelstraße 18, A-1015 Wien, www.tuv.at



**GREEN
OFFICE**

A WWF INITIATIVE
TO REDUCE
ECOLOGICAL
FOOTPRINT



Infratech Pakistan (Pvt.) Limited

A Design Associate OF HRL

A design associate of HRL Infratech Pakistan (Pvt.) Limited was formed in 2005 to carry out detailed engineering works at site in order to address and translate the site related facilities into engineering solutions.

Infratech Pakistan (Pvt.) Limited proved to be a good blend of professional engineers and technical staff to extend the services commercially. Infratech Pakistan (Pvt.) Limited is engaged in the design of infrastructure projects involving the town planning, design of roads, pavements, sewerage, water supply and electrical works apart from the design of high-rise structural elements with equally delicate architectural elements and finishes.

HRL is now capable to execute EPC contracts in co-ordination with our own design expertise available as Infratech Pakistan (Pvt.) Ltd.



Direct Shear Test Machine



Consolidation Test Machine



**Berkeley
Associates**

Berkeley Associates is an associate company of Habib Rafiq Pvt. Ltd specializing in provision of Design and Engineering Services for the Infrastructure and Power Projects. The company has highly qualified engineers who have vast experience of Designing of mega projects in Pakistan and abroad. Main areas of Design and Engineering Services include;

■ **Topographic and Bathymetric Surveys**

■ **Geotechnical Engineering**

Soil Investigations, Laboratory Testing, Design of Shallow and Pile Foundations, Pile Load Testing (Static, PDA, PIT)

■ **Geophysical Studies**

Seismic Survey and Earthquake Studies, Electrical Resistivity Studies, Induced Polarization Studies, VLF Electromagnetic Studies, Geological Mapping

■ **Hydrology and Groundwater Engineering**

Collection and Analyses of Hydrological Data & Flood Studies, Groundwater Resource Assessment & Numerical Modeling, Design and Construction of Dewatering Systems

■ **Environmental Studies**

Initial Environmental Assessment (IEE), Environmental Impact Assessment (EIA)

■ **Structural Engineering**

Detailed Design of Buildings, and Industrial Structures, Design of Powerhouses, Cooling Towers, Compressors Foundations, Storage tanks, Design of Bridges

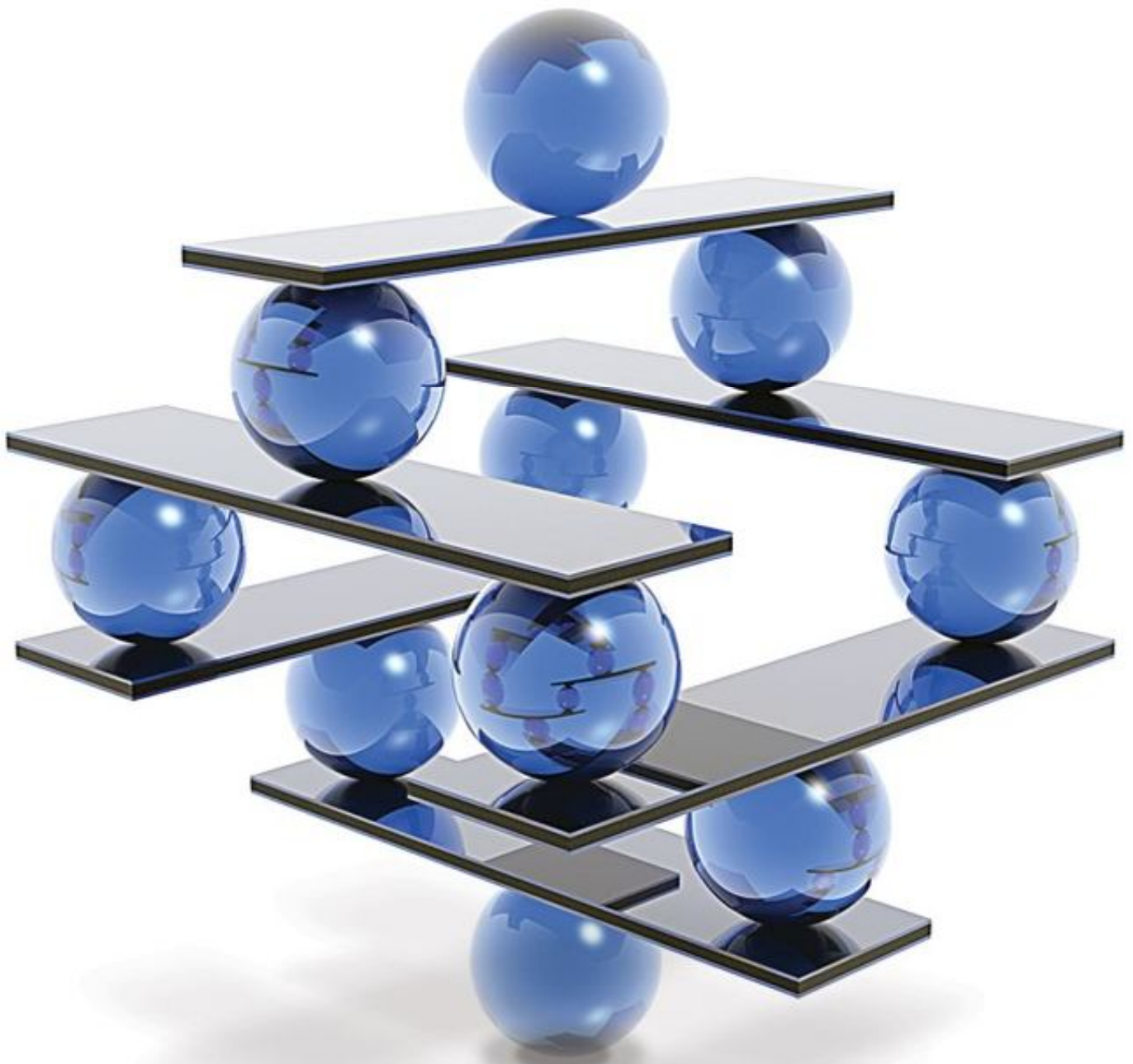
■ **Road and Pavement Engineering**

Geometric and Alignment Design of Roads, Detailed Design of Rigid and Flexible Pavements

■ **Construction Supervision and Quality Control**

Construction Planning and Progress Monitoring, Resident supervision of Construction Projects Design and Implementation of Remedial Measures

Areas of Operation



Power & Energy

Chemicals & Petrochemicals

Oil & Gas

Environmental

Airports & Aviation

Water Resources Engineering

Buildings

Roads, Housing & Infrastructure

Power & Energy

“Adding Greater Value to the Power & Energy Sector”

HRL has extensive experience in Power Plants design and construction. It ranges from Oil fired to most advanced combined cycle gas turbine power plants. HRL has contributed around 4000 MW of electricity to the national grid which makes 60% of total national thermal power generation.



747 MW Guddu Power Plant

Project: **747 MW Guddu Power Plant**
Location: **Kashmore, Guddu**
Client: **WAPDA**

Scope of Work:

Construction of:-

- All piling works
- Turbine & generator building
- Boiler and HRSG foundations
- Cooling towers
- HVAC system
- Fire fighting system
- Treatment buildings
- Fuel oil storage tanks foundation
- All ancillary structures
- Temporary facilities
- Operator's colony including road works
- Administration building



724 MW Oil Fired AES Power Plant

Project: **724 (2x362) MW Oil Fired Power Plant.**
Location: **Lalpir, Pakistan**
Client: **AES**

Scope of Work:

Construction of:

- Gas turbine house ■ Control room buildings
- Steam turbine halls
- Generator foundations ■ Switch yard
- HVAC system ■ Cooling Towers
- Fire fighting system ■ Mechanical fabrication and erection
- Steel structure fabrication and erection
- Water treatment buildings
- Ancillary structures for balance of plant
- Water intake structure ■ Drainage system
- 150m high concrete chimneys
- Plant sewerage, drainage and roads ■ Concrete works



412 MW Combined Cycle Rousch Power Plant

Project: **412 MW Combined Cycle Rousch Power Plant**

Location: **Abdul-Hakeem, Pakistan**

Client: **Rousch Power**



Scope of Work:

- Detailed civil engineering for all structures like turbine, generator & boiler foundations, central administration, cooling towers, water treatment & auxiliary buildings
- Electrical facilities for balance of plant
- Erection & commissioning of turbines generators and auxiliaries
- HVAC system ■ Fire fighting system
- Concrete works ■ Mechanical fabrication & erection
- Fabrication and laying of railway track for decanting station
- Construction of plant roads, drainage and infrastructure facilities
- Design and construction of residential colony



400 MW Combined Cycle Power Plant

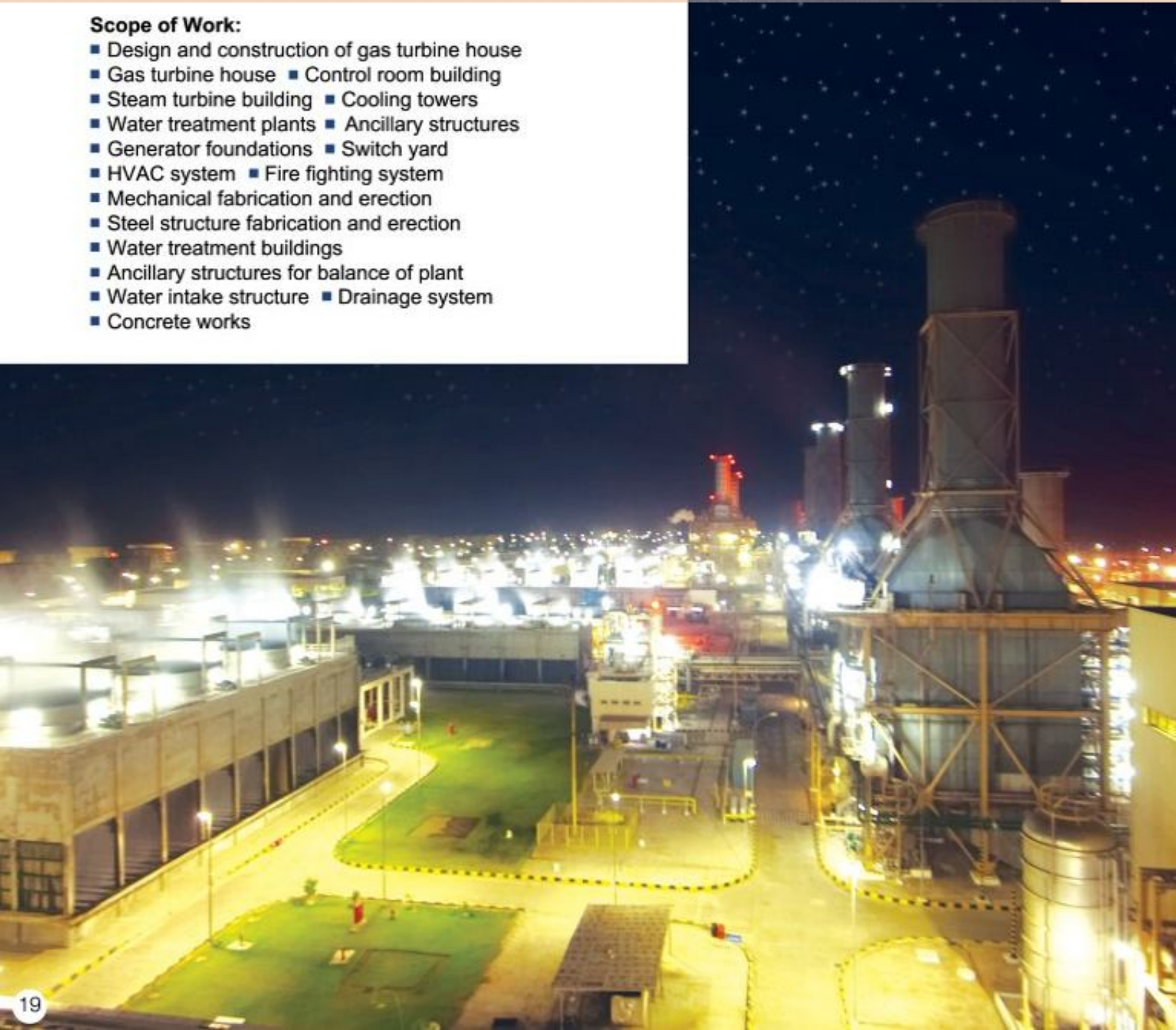
Project: **400 MW Combined Cycle Power Plant (unit 13,14 &15)**

Location: **Kot Addu, Pakistan**

Client: **WAPDA**

Scope of Work:

- Design and construction of gas turbine house
- Gas turbine house ■ Control room building
- Steam turbine building ■ Cooling towers
- Water treatment plants ■ Ancillary structures
- Generator foundations ■ Switch yard
- HVAC system ■ Fire fighting system
- Mechanical fabrication and erection
- Steel structure fabrication and erection
- Water treatment buildings
- Ancillary structures for balance of plant
- Water intake structure ■ Drainage system
- Concrete works



234 MW Combined Cycle Power Plant

Project: **234 MW Combined Cycle Power Plant.**
Location: **Muridke, Sheikhpura, Pakistan**
Client: **Sapphire Electric Company (Pvt.) Ltd.**

Scope of Work:

Complete civil works including:

- Piling ■ Foundation for gas turbines
- Foundation for steam turbines
- Foundation for boilers
- HVAC system ■ Fire fighting system
- Cooling towers
- Water treatment building
- Water & fuel tanks
- E & I
- Fabrication & erection of steel structures
- Complete infrastructure, roads and ancillary facilities for balance of plant



225 MW Combined Cycle Power Plant

Project: **225 MW Combined Cycle Power Plant**
Location: **Balloki, Pakistan**
Client: **Orient Power**

Scope of Work:

Complete civil works including:

- Piling
- Foundation for gas turbines
- Foundation for steam turbines
- Foundation for boilers
- HVAC system
- Fire fighting system
- Cooling towers
- Water treatment building
- Water & fuel tanks
- Fabrication & erection of steel structures
- Complete infrastructure, roads & ancillary facilities for balance of plant



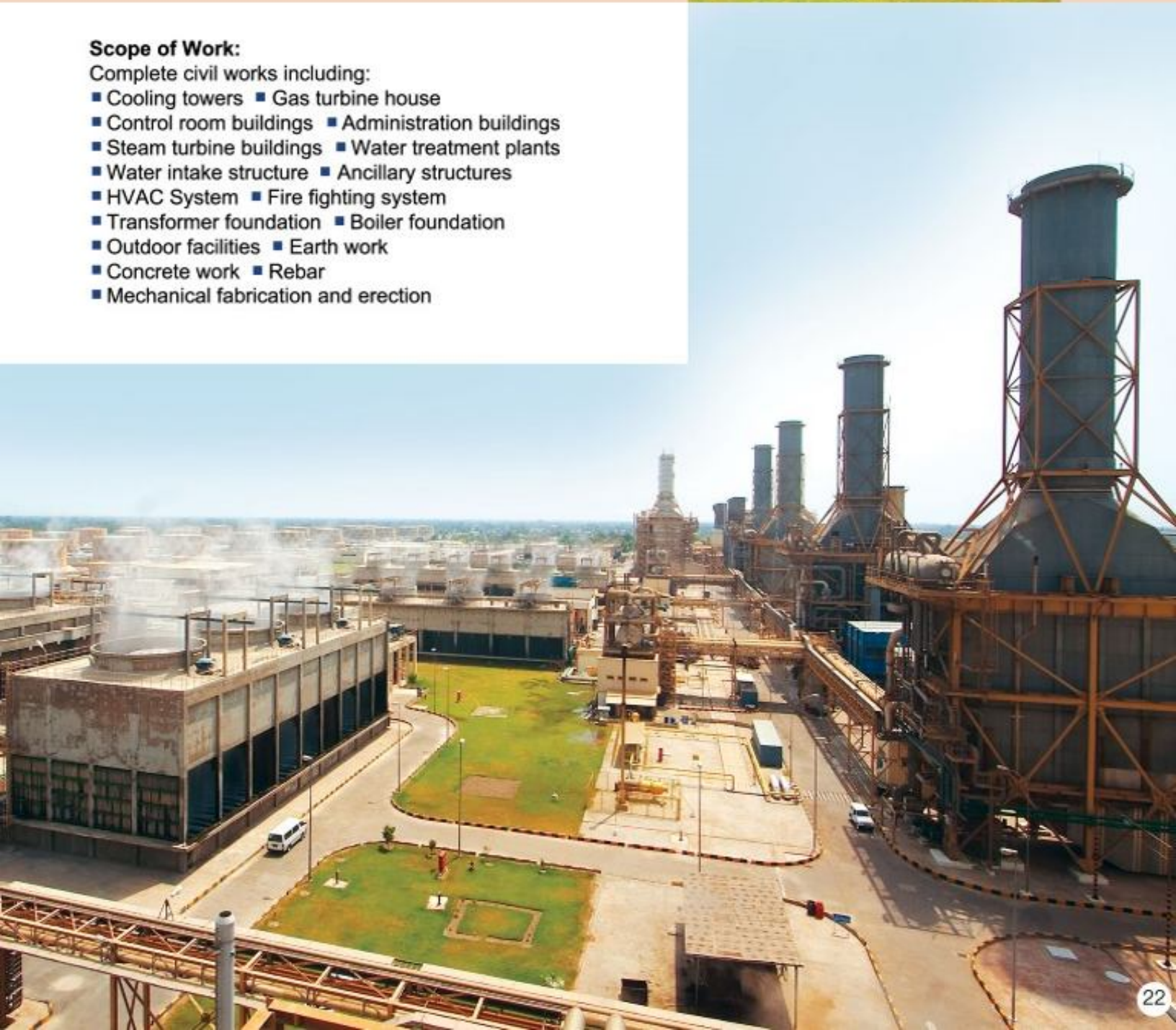
300 MW Thermal Power Plant

Project: **300 MW Thermal Power Plant**
Location: **Guddu, Pakistan**
Client: **WAPDA**

Scope of Work:

Complete civil works including:

- Cooling towers ■ Gas turbine house
- Control room buildings ■ Administration buildings
- Steam turbine buildings ■ Water treatment plants
- Water intake structure ■ Ancillary structures
- HVAC System ■ Fire fighting system
- Transformer foundation ■ Boiler foundation
- Outdoor facilities ■ Earth work
- Concrete work ■ Rebar
- Mechanical fabrication and erection



300 MW Power Plant

Project: **300 MW Power Plant (unit 3,4,5)**

Location: **Guddu, Pakistan**

Client: **WAPDA**

Scope of Work:

- Construction of gas turbine
- Control room buildings
- Steam turbine building
- Cooling towers
- HVAC system
- Fire fighting system
- Water treatment plant
- Ancillary structures
- Water intake structure
- Drainage system and asphalt roads
- Mechanical fabrication and erection



400 MW Power Plant

Project: **400 MW Power Plant (unit 7,8,9)**

Location: **Kot Addu, Distt. Muzaffargarh, Pakistan**

Client: **WAPDA**

Scope of Work:

- Construction of gas turbine
- Control room buildings
- Steam turbine building
- Cooling towers
- HVAC system
- Fire fighting system
- Water treatment plant
- Ancillary structures
- Water intake structure
- Drainage system and asphalt roads
- Mechanical fabrication and erection



400 MW Power Plant

Project: **400 MW Power Plant**

Location: **Guddu, Distt. Jacobabad, Pakistan**

Client: **WAPDA**

Scope of Work:

- Construction of gas turbine
- Control room buildings
- Steam turbine building
- Cooling towers ■ HVAC system
- Fire fighting system ■ Water treatment plant
- Ancillary structures ■ Water intake structure
- Drainage system and asphalt roads
- Fabrication and erection of steel structure
- Mechanical fabrication and erection
- CW pipe lines



125 MW Oil Fired Saba Power Plant

Project: **125 MW Oil Fired Saba Power Plant**

Location: **Farooqabad, District Sheikhpura, Pakistan**

Client: **Costal Power (Pvt.) Ltd.**



Scope of Work:

Complete Civil Works including:

- Turbine foundation ■ Generator foundation
- Cooling tower foundation ■ HVAC system
- Fire fighting system
- TG enclosure fabrication & installation
- Electro mechanical works ■ Balance of plant works
- Cooling tower fabrication and erection
- Pressure vessels fabrication and erection
- Turbine installation and commissioning
- Process piping works ■ Fabrication & erection of lube oil
- Fabrication & erection of distilled water tanks
- Mechanical fabrication and erection



POWER & ENERGY

220/33 KV Substation

Project Name: **220/33 KV Substation**
Location: **Al-Salamat, U.A.E**
Client: **Abu Dhabi Water
& Electricity Authority (ADWEA)**

220/33 KV Substation

Project Name: **220/33 KV Substation**
Location: **Al-Oha, U.A.E**
Client: **Abu Dhabi Water
& Electricity Authority (ADWEA)**

HRL has contributed through its core expertise in the power sector even in the Middle East. The construction of substations at multiple locations was taken as a stepping stone towards sizable construction projects.

HRL successfully built, commissioned and handed over substations at Al-Oha, U.A.E.



POWER & ENERGY

Relocation of 220/33 KV Substation

Project Name: **Relocation Of 220/33
KV Substation**
Location: **Al-Salamat, U.A.E**
Client: **Abu Dhabi Water
& Electricity Authority (ADWEA)**

400 KV/ 220 KV Substation

Project Name: **400KV/220KV Substation**
Location: **Sillah, Al-Shuweihat S1, U.A.E**
Client: **International Power Plant
Producers**

HRL was awarded with the electromechanical and civil construction jobs for sub-stations at different locations by the same client in quick succession of each other. It shows the faith of client in the work quality and comfort maintained by HRL during the execution of works.

HRL claims the repetition of orders from the internationally acknowledged players as its hall mark and distinction from the competitors in the market domestically and abroad.



132 KV Substation

Project Name: **132 KV Substation**
Location: **Taweelah, U.A.E**
Client: **Abu Dhabi Water
& Electricity Authority (ADWEA)**

33 KV Substation

Project Name: **33 KV Substation**
Location: **Taweelah, U.A.E**
Client: **Abu Dhabi Water
& Electricity Authority (ADWEA)**

HRL has shown its determination towards quality and high engineering works irrespective of the terrain, climate and areas. The construction of Taweelah Substation in the middle of desert is one such examples.

HRL has produced highest quality of man power even working on multiple projects of distinct nature. This is a glaring example of the superiority of system which has always prevailed.



132/11 KV Substation

Project Name: **132/11 KV Sub-station**
Location: **Al-Mushref, U.A.E**
Client: **Abu Dhabi Water
& Electricity Authority (ADWEA)**

132/11.5 KV Gas Insulated Switchgear Substation

Project Name: **132/11.5 KV
Gas Insulated Switchgear (GLS) Sub-Station**
Location: **Lahore**
Client: **WAPDA**

HRL has exhibited its strength in electrical, mechanical and instrumental fields by successfully installing and commissioning the gadgets for maximum to medium sized substations.

HRL has contributed to the power and energy side through the engineering and construction of substations in various areas of the country with Lahore being no exception.



Reinforcement of 6x5 MW Power Plant

Project Name: **Reinforcement Of 6X5 MW Power Plant (K.S.A)**
Location: **Farasan, K.S.A**
Client: **SEC-SOA-M/s. Saudi Service Electro Mechanic Work Co.**

Scope Of Work:

- Installation/testing/commissioning of 6 x 5 MW diesel generating sets (supplied by M/s. Wartsila) with all auxiliaries
- Installation/testing/commissioning of all electrical, mechanical equipment i.e. 13.8 KV switchgear, Auxiliaries
- Transformer
- L.V. switchgear
- Remote control panels
- 13.8 transfer pumps
- Exhaust system
- Fire alarm and fire fighting system
- HVAC system
- Ventilation system
- All civil works covering design & constructions of DG building
- Other associated building & warehouse
- All equipment foundations
- Trenches
- Roads

Extention of 25 MW KAMC Power Plant

Project Name: **Extension Of 25 MW KAMC Power Plant**
Location: **Tabuk, K.S.A**
Client: **Ministry of Defence & Aviation**

Scope Of Work:

- Complete civil works
- Mechanical works
- Electrical works
- Turbine installation
- HVAC system (Design & installation)
- Cooling tower (Fabrication & erection)
- Pressure vessels (Fabrication & erection)
- BOP Installation
- Piping works
- Turbine foundation
- Generator foundation
- Cooling tower foundation
- TG enclosure (Fabrication & installation)



O & M

KAPCO Combined Cycle Power Plant

Project: **Kapco Combined Cycle Power Plant**

Location: **Kot Addu**

Client: **Kot Addu Power Company Limited**
(National Power UK)



Scope of Work:

Turnaround & maintenance Contract.

The activities comprise of:

- Supply of direct and indirect personal
- Procurement of all direct and indirect materials
- Mobilizing and de-mobilizing construction equipment
- Planning and scheduling of entire activities
- Painting of KAPCO all tanks
- Overall project management and quality Controls



14 MW Hydro Power Plant Nalter-V

Project: **14 MW Hydro Power Project Nalter-V (EPC)**

Location: **Gilgit, Distt.**

Client: **Govt. of Gilgit Baltistan**



Scope of Work:

The construction activities comprise of:

- Diversion weir, intake structure & tunnel
- HVAC system
- Fire fighting system
- Civil & allied works
- Mechanical fabrication & erection
- Fabrication of penstock
- Installation of electrical & mechanical equipments
- Power station including 66 KV sub-station
- Concrete works



Rehabilitation of 22 MW Jabban Hydro Power Plant

Project: **Rehabilitation of 22 MW Jabban Hydro Power Station**
Location: **Jabban, Khyber Pukhtoonkhwah (KPK)** at a distance of 45 km from Mardan, 7 km upstream of 20 MW Dargai Hydro Electric Power Station
Client: **Wapda**



Scope of Work:

The activities comprise of:

- Dismantling of existing civil structures
- Design, supply, construction, erection, testing and commissioning of 22 MW Jabban hydro electric power station including 132 KV sub station
- HVAC system
- Fire fighting system
- Complete civil works
- Complete electrical works
- Mechanical fabrication and erection



2 x 660 MW Coal Fired Power Plant

Project: **2 x 660 MW Coal Fired Power Plant**

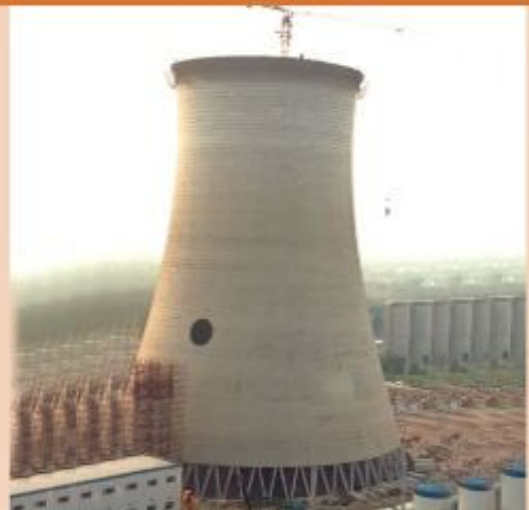
Location: **Sahiwal**

Client: **SEPCO1 Electric Power Construction Corporation**

Scope of Work:

Complete Infrastructure Development works.

- Foundation treatment/soil replacement works of main Power House, Cooling Tower and Chimney
- Internal plant concrete roads including patrolling roads
- Construction of camp for plant construction team
- Construction of plant boundary wall
- Supply and erection of fresh water pipeline
- Providing fabrication and erection of security watch towers (30 Nos)
- Complete drainage works



1223 MW RLNG Based Combined Cycle Power Plant

Project: **1223 MW RLNG Based Combined Cycle Power Plant**

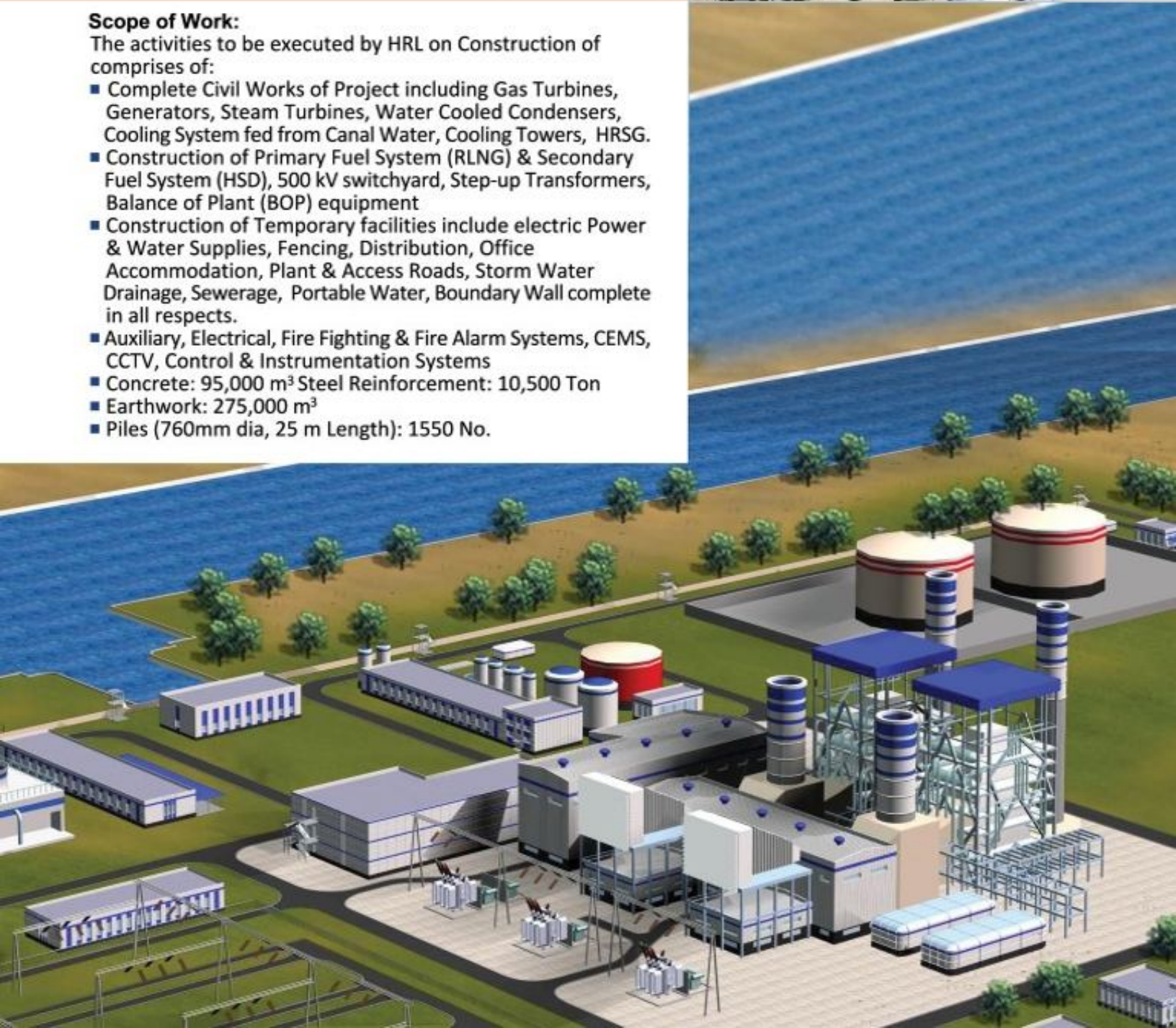
Location: **Balloki**

Client: **Quaid-e-Azam Thermal Pvt. Ltd.**

Scope of Work:

The activities to be executed by HRL on Construction of comprises of:

- Complete Civil Works of Project including Gas Turbines, Generators, Steam Turbines, Water Cooled Condensers, Cooling System fed from Canal Water, Cooling Towers, HRSG.
- Construction of Primary Fuel System (RLNG) & Secondary Fuel System (HSD), 500 kV switchyard, Step-up Transformers, Balance of Plant (BOP) equipment
- Construction of Temporary facilities include electric Power & Water Supplies, Fencing, Distribution, Office Accommodation, Plant & Access Roads, Storm Water Drainage, Sewerage, Portable Water, Boundary Wall complete in all respects.
- Auxiliary, Electrical, Fire Fighting & Fire Alarm Systems, CEMS, CCTV, Control & Instrumentation Systems
- Concrete: 95,000 m³ Steel Reinforcement: 10,500 Ton
- Earthwork: 275,000 m³
- Piles (760mm dia, 25 m Length): 1550 No.



1180 MW RLNG Based Combined Cycle Power Plant

Project: **1180 MW RLNG Based Combined Cycle Power Plant (EPC)**

Location: **Bhikki Distt. Sheikhupura**

Client: **Quaid-e-Azam Thermal Pvt. Ltd.**

Scope of Work:

The activities to be executed by HRL on Construction of comprises of:

- Complete Civil Works of Project including Gas Turbines, Generators, Steam Turbines, Water Cooled Condensers, Cooling System fed from Canal Water, Cooling Towers, HRSG.
- Construction of Primary Fuel System (RLNG) & Secondary Fuel System (HSD), 500 kV switchyard, Step-up Transformers, Balance of Plant (BOP) equipment
- Construction of Temporary facilities include electric Power & Water Supplies, Fencing, Distribution, Office Accommodation, Plant & Access Roads, Storm Water Drainage, Sewerage, Portable Water, Boundary Wall complete in all respects.
- Auxiliary, Electrical, Fire Fighting & Fire Alarm Systems, CEMS, CCTV, Control & Instrumentation Systems
- Concrete: 95,000 m³ Steel Reinforcement: 10,500 Ton
- Earthwork: 275,000 m³
- Piles (760mm dia, 25 m Length): 1550 No.



1x46 MW Nishat Coal Based Captive Power Plant

Project: 1 X 46 MW Nishat Coal based
Captive Power Plant

Location: **Chunian**

Client: **NC Electric Company Limited**

Scope of Work:

Complete Civil Works of Power Plant Structures, Buildings including finishing, Internal & External Electrification, Drainage, Sewerage, HVAC Works.

- Excavation = 125,000 m³
- Concrete = 28,500 m³
- Steel Reinforcement = 3,250 Tons
- Asphalt Concrete Roads = 9,720 m³
- Erection of Mechanical Structures = 2150 Tons



Chemicals & Petrochemicals

“We are a Working Catalyst in Chemical & Petrochemical Sector”

HRL is proud to be a part of team involved in the construction of the largest units of Oil, Fertilizers and Petro Chemical sectors. This gives us a deep feeling of achievement and success.



CHEMICALS & PETROCHEMICALS

FJFC Urea-DAP Ammonia Fertilizer Plant

Project: **FJFC Urea-DAP Ammonia Fertilizer Plant**

Location: **Bin Qassim, Karach**

Client: **Fauji Fertilizer Company**



Scope of Work:

Complete civil engineering design & construction including:

- Construction of urea plant
- Raw material storage
- Cooling tower
- HVAC system
- Fire fighting
- Mechanical fabrication and erection
- Natural gas station
- Pipe racks
- Control room and electrical sub station
- Gas pipeline sleepers
- Prilling tower
- Complete infrastructure
- Multi function buildings
- Control rooms
- Earth work and excavation
- Leveling and grading
- Concrete works graveling
- Form piping
- Plant roads area = 95,000 M²



CHEMICALS & PETROCHEMICALS

Steel Structure Assembly & Installation

Project Name: **Steel Structure Assembly & Installation at Yansab Project**

Location: **Yanbu - KSA**

Client: **Saudi Binladen Group PCM Division.**

Scope of Work:

- Assembly
- Installation
- Alignment & handing over of steel structure
- Pipe racks for East/West
- Effluent area
- Flare & incinerator area
with a total weight of 3500 tons



Dewan Salman Acrylic Fibre Plant

Project: **Dewan Salman Acrylic Fibre Plant**

Location: **Hattar Industrial Sate, NWFP**

Client: **Dewan Mushtaq Group**



Scope of Work:

- Civil works including:
- Excavation
- Concrete
- Steel reinforcement
- Formwork
- Brick masonry
- Plaster work
- HVAC system
- Fire fighting system
- Mechanical fabrication and erection
- Tile/ marble work
- Water proofing
- Painting
- Drainage
- Concrete roads
- Concrete flooring & side development including leveling and grading
- Complete electro-mechanical work in cludes 900 tons fabrication and erection of steel structure
- Erection of textile / chemical equipment
- S.S/M.S piping
- Instrumentation and commissioning works



CHEMICALS & PETROCHEMICALS

Dedusting System- Qassim Cement Co.

Project Name: **Dedusting System - Qassim Cement Co.**

Location: **Qassim, Saudi Arabia**

Client: **FLS Airtech - Denmark**



Scope Of Work:

- Complete design and civil works
- Complete mechanical erection (equipment supplied by FLS)
- All insulation & electrical works
- Design supply & Installation of covering
- Commissioning & start up services



CHEMICALS & PETROCHEMICALS



Oil & Gas

“Growth & Development through Exploration”



Parco Mid Country Oil Refinery

Project Name: (100,000 BPD)

Parco Mid Country Oil Refinery

Location: **Qasba Gujrat, Muzaffargarh – Pakistan**

Client: **PARCO**

Scope Of Work:

- Design and construction of control buildings involving blast resistant design and fixtures
- Detailed engineering, fabrication, erection and testing of under ground drainage and fire fighting pipeline, 4" - 20" =175,000 dia inches
- Complete HVAC, electrical, plumbing and mechanical works
- 4000 tons of steel structure fabrication and erection in less than 4 months
- Construction of foundations for fuel oil tanks
- Construction of dike walls for fuel oil tanks
- Construction of water drainage system for the entire plant
- Installation of cathodic protection system for tanks and pipe lines
- Installation and testing of HDPE membrane under the tank foundations and dikes
- Construction of Internal plant roads involving asphaltic concrete
- Installation of fire fighting sprinkle system at multiple location including the product storage building



Attock Oil Refinery Up-gradation

Project Name: **30,000 BPD, Attock Oil Refinery
Up-gradation**

Location: **Morgah, Rawalpindi - Pakistan**

Client: **Attock Refinery**



Scope Of Work:

- Detailed design involving re-engineering of facilities

Complete civil & steel structure works involving:

- Fabrication and erection of
- Steel structure works
- HVAC system
- Fire fighting system
- Mechanical fabrication and erection
- Plumbing works
- Fabrication, erection and testing of pressure rated piping including insulation and cladding
- Fabrication, erection, testing, lifting, placing of pressure vessels
- HVAC works for control building



OIL & GAS



Environmental

“Striving for Unpolluted Environment”



Common Effluent Pre-treatment Plant

Project Name: **Common Effluent Pre-treatment Plant**

Location: **Kasur, Pakistan**

Client: **Kasur Tannery Waste Management Agency (KTWMA)**



Scope Of Work:

- Construction of supply channel
- Screen house
- Equalization tanks
- Settling tanks
- Pump houses
- Embankments
- Clarifiers
- Facultative lagoons
- Sludge disposal
- Lagoons and other facilities
- Laying of geo-membrane
- Erection of fibre glass pipe line
- Mechanical jobs
- Electrical jobs
- Construction of control rooms
- HVAC System
- Fire fighting System
- Mechanical fabrication and erection



Hub Water Treatment Plant

Project Name: **Hub Water Treatment Plant - C4**

Location: **Karachi, Pakistan**

Client: **Karachi Water Supply Board**

Scope Of Work:

- Site formation, drainage and landscaping
- Boundary wall and guard house
- Chemical building, administration building
- Facultative lagoons, sludge disposal lagoons and other facilities
Including laying of geo - membrane, erection of fiber glass pipe line, electrical & mechanical jobs
- Generator building, transformer compound, thickeners, fuel drainage, pipe work and cable ducts
- Roads, paving & building services

Sewage Treatment Plants (Phase 1, 2, 3 & 4)

Project: **Sewage Treatment Plants (Phase 1,2,3 & 4)**

Location: **Sector 1-9, Islamabad**

Capacity: **17 MGD Capacity (335000 Population Equivalent)**

Client: **Capital Development Authority**

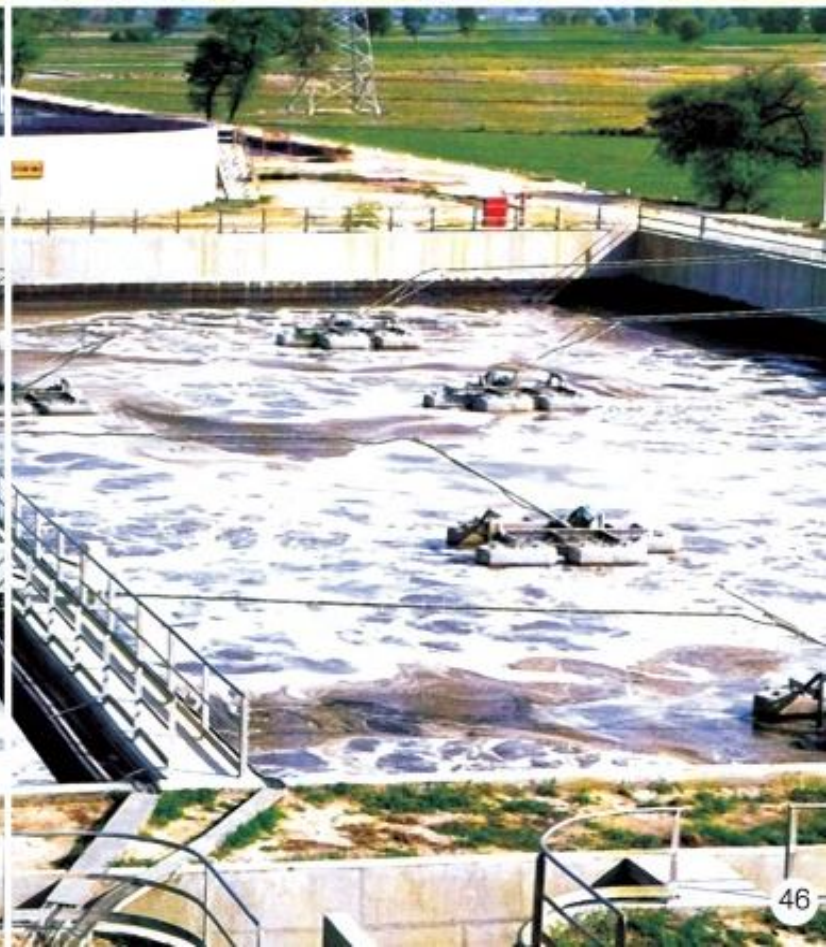
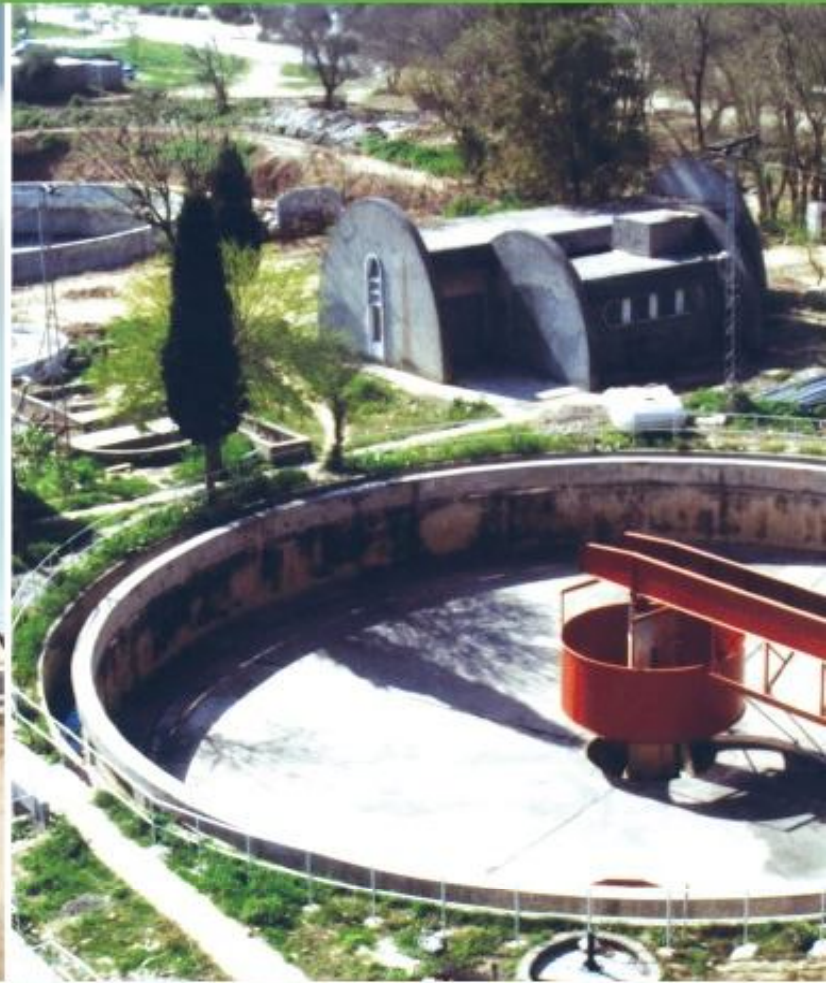
Scope Of Work:

The activities comprise of:

- Pumping station, administration building (old), sludge thickener
 - Sludge Stabilization
 - Tank, drying bed pumping station, sludge drying beds, sludge area
 - Administration building (new), coarse screen, pretreatment, primary settler, primary sludge pumping station, active sludge tank, deaerator Recirculation sludge pumping station, clarifier, flow measurement-water, electrical building
1. Excavation at pumping station up to 60 ft. down involving dewatering
 2. Laying & Jointing of RCC Pipe 1200, 800 & 600 mm
 - Total length 2200 m
 - M.S Pipe 1400, 1100 mm nullah crossing
 - Fiber glass 800, 600, 500, 450 mm, length 3500 M



ENVIRONMENTAL



Airports & Aviation

“Reaching for New Horizons through Aviation”

HRL has entered in to new field of Airports construction profound by international norms and standards of Aviation Industry.



Multan International Airport

Project: **Multan International Airport**
Location: **Multan International Airport,
Multan, Pakistan**
Client: **Civil Aviation Authority**



Scope of Work:

- Covered area: 380,000 Sft (Approx)
- External & internal electrification systems
- Fire alarm & fire fighting system
- HVAC system
- Scanning systems
- Elevators & escalators
- 2000 KVA standby generator system
- Passenger boarding & docking system
- Electrical installation
- Mechanical & fabrication
- Car parking area



Water Resources Engineering

**“Contributing to the Nation through Water Preservation
and Regulating Projects”**



Kachhi Canal Project

Project Name: **Kachhi Canal Project**
Location: **D. G. Khan (from RD 531+000 to RD 1005+000), Pakistan**
Client: **WAPDA**

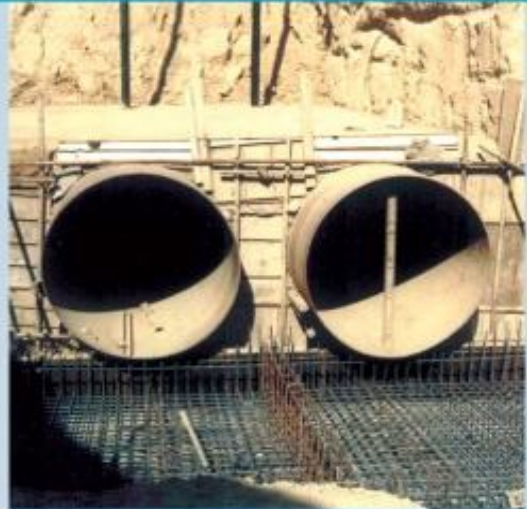
Scope Of Work

- Earth works
- Construction of compact canal embankment and concrete lining = 144 km.
- Water course crossing = 2 Nos.
- V.R. bridges = 15 Nos.
- A.R. bridges = 1 Nos.
- Sui gas pipeline crossing = 2 Nos.
- Water supply pipe line crossing = 1 Nos.
- Canal syphons = 4 Nos.
- Super passages = 28 Nos.
- Escape structure = 2 Nos.
- Nullah syphons = 2 Nos.



Raw Water Reservoir Khanpur Dam

Project Name: **Raw Water Reservoir Khanpur Dam**
Location: **Khanpur, Pakistan**
Client: **Capital Development Authority**



Scope Of Work

- Excavation and earth work = 18,00,000 CM
- Filling = 5,50,000 CM
- Cement soil stabilization = 80,000 CM
- Stone work = 14,000 CM
- Road area = 30,000 Sq. m.
- Asphalt lining of reservoir = 85,000 Sq. m.
- Concrete for culverts and outlet structure = 10,000 CM
- Pipe work of dia 1550 mm = 12 km.



WATER RESOURCES ENGINEERING



Buildings

“Adding a New Dimension to Building Construction”

HRL has once again taken the lead in the construction of purpose built, state-of-the-art and the tallest buildings in private and corporate sector.

The design and purchase of special form works, tower cranes and concrete associated paraphernalia for the purpose is yet another feather in our cap.

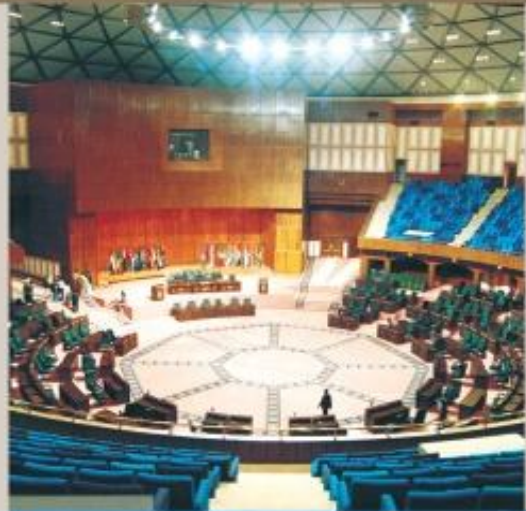


Convention Center

Project Name: **Convention Center**

Location: **Islamabad, Pakistan**

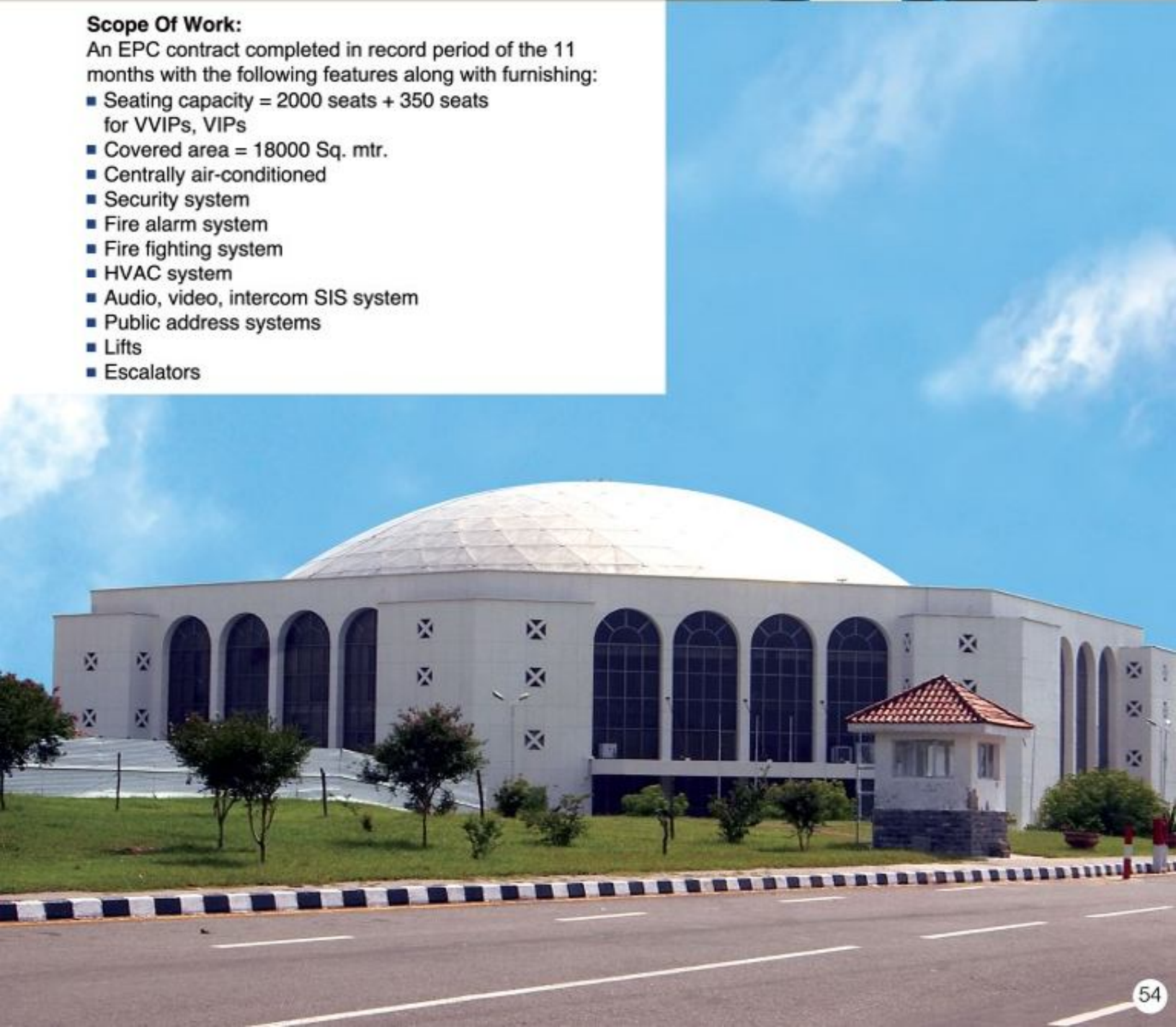
Client: **Capital Development Authority**



Scope Of Work:

An EPC contract completed in record period of the 11 months with the following features along with furnishing:

- Seating capacity = 2000 seats + 350 seats for VVIPs, VIPs
- Covered area = 18000 Sq. mtr.
- Centrally air-conditioned
- Security system
- Fire alarm system
- Fire fighting system
- HVAC system
- Audio, video, intercom SIS system
- Public address systems
- Lifts
- Escalators



Tricon Corporate Center

Project: **Tricon Corporate Center**

Location: **Lahore, Pakistan**

Client: **Tricon (Pvt.) Ltd.**



Scope of Work:

Design and construction of entire structure with following features:

- Total covered area 540,000/sft
- Ground floor = 1Nos.
- Lower ground floor = 1 Nos.
- Basements = 5 Nos.
- Mezzanine floors = 1 Nos.
- Upper ground floors = 17 Nos.
- HVAC system
- Fire fighting system
- Piling
- Excavation
- Concrete works
- Steel reinforcement
- Electrification works including installation of elevators and escalators
- Public health works



Grand Jamia Mosque

Project Name: **Grand Jamia Mosque**

Location: **Bahria Town, Lahore**

Client: **Bahria Town (Pvt.) Limited**



Main Features:

- World's 7th Largest Mosque with a Capacity of 70,000 persons (open compound)
- Pakistan's Largest Indoor Praying Facility with a capacity of 25,000 persons (Indoor)

The HRL scope of work was execution of complete structure of the building. The structure comprises of 4 minarets, each standing tall at 165 ft. and a Grand Dome in the center, which is surrounded by 20 smaller domes. The total capacity of this magnificent piece of Islamic architecture is 70,000 making it the worlds 7th Largest mosque. It has an indoor capacity of 25,000, labeling it Pakistan's Largest Mosque. There are dedicated praying areas for women, a school and an Islamic Art Gallery.



3 Blocks Creek Vista At Creek City

Project Name: **3 Blocks Creek Vistas at Creek City**
Location: **DHA Phase 8, Karachi, Pakistan**
Client: **Defence Housing Authority, Karachi**

Scope Of Work:

- Complete civil works
- Piling
- Electromechanical works
- Fire fighting
- HVAC system
- Architectural
- Elevators
- Sewerage
- Plumbing and landscaping works of 3 blocks (2xA type & 1xB type apartment) each consisting of 1 basement and 14 storeys having covered area approx. 585,366 S. ft.



Bahria Icon

Project: **Bahria Icon Tower**

Location: **Clifton Quarters, Karachi.**

Client: **Galaxy Construction (Pvt.) Ltd.**



Scope of Work:

Project Features:

- The Highest Building in Pakistan
- 07 Basements
- (Public and office car parking)
- Total number of Storyes = 60 (30 residential, 06 commercial, 24 office)
- Car parking = 1566 Vehicles.
- Titanium & glass Facade.
- Self Power Generation.
- HVAC system
- Fire fighting system
- Plot Area = 14500 Sq. m. (17,366 Sq. Yards)
- Proposed covered area= 222945 Sq. m, (2.8 Million Sq Ft).



Nestle Egron-2 Project

Project Name: **Nestle Egron-2 Project**

Location: **Shaikhupura Road, Lahore.**

Client: **Nestle Pakistan Limited**



Scope of Work:

- Construction of Nestle Egron-2 building
- Construction of scanima / evaporate building
- Construction of QA lab.
- Civil works, plumbing works, electrical works and internal road works
- Fire fighting system
- HVAC system
- Concrete works



Tetra Pak Lahore-2 Project

Project Name: **Tetra Pak Lahore-2 Project**
Location: **Sundar Industrial Estate, Lahore**
Client: **Tetra Pak Pakistan (Pvt.) Limited**

Scope of Work:

Construction of infrastructure / external works and independent buildings, with RCC structure, PEB roof system, brick masonry for:

- Piping & erection works
- Production, warehouse, support, guard houses,
- Pump room and water tank, solvent storage, gas station,
- Cooling plant, offices, internal roads & parking areas
- Fire fighting system
- HVAC system
- All infrastructural works



Construction of Women's Hostel at Forman Christian College

Project Name: **Construction of Women's Hostel at Forman Christian College (Chartered University)**

Location: **Lahore**

Client: **Forman Christian College**

Scope of Work:

- Ground Floor + 5 Storeys
- RCC Frame Structure Building
- All Allied Works
- Internal & External Electrification
- Internal & External Plumbing Works
- HVAC system
- Fire fighting system
- External Civil Works

Foundation Medical College

Project Name: **Foundation Medical College**

Location: **Islamabad, Pakistan**

Client: **Fauji Foundation**

Scope of Work:

- Construction of Academic Block
- Lecture halls
- Labs
- Museums
- Dissection Hall
- Equipment and computers cell
- Complete Civil Works
- Electrical
- Plumbing and External Development Works



BUILDINGS

Shaheen Complex

Project Name: **Shaheen Complex**

Location: **Abbott Road, Lahore**

Client: **Shaheen Foundation (PAF) Islamabad**

Scope Of Work:

- RCC structure with 2B+G+8 storey
- Complete civil work
- Piling works
- Electromechanical works
- Fire fighting
- HVAC system
- Elevators
- Plumbing
- Electrification

Pakistan Institute for Parliamentary Services

Project Name: **Pakistan Institute for Parliamentary Services**

Location: **Islamabad, Pakistan**

Client: **USAID, Pakistan**

Scope Of Work:

- Covered area: 54,345 S. ft.
- Civil works
- WAPDA metering room
- Fire fighting tank
- Sewerage & drainage system
- Water supply system
- Landscaping
- Electrical works including solar energy
- CCTV system
- Lighting protection system
- Standby power supply system
- HVAC & elevators



Enercon Building

Project Name: **Enercon Building**
Location: **Islamabad, Pakistan**
Client: **Enercon**

Scope of Work:

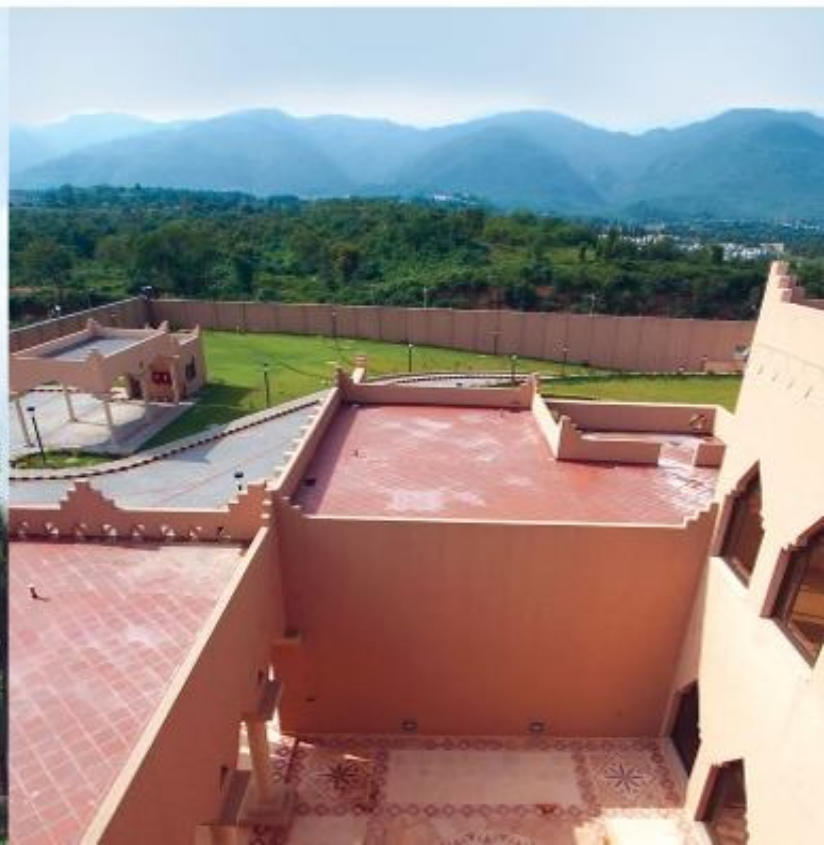
- Number of Storeys above ground = 7
- Complete construction on 7,000 M² covered area
- HVAC system
- Casting & Erection pre-cast panels
- Erection and testing of all utilities
- Complete electrical works
- Fire fighting works
- Supply and erection of elevators
- Imported granite finish on facade

Saudi Ambassador's Residence

Project Name: **Saudi Ambassador's Residence**
Location: **Islamabad, Pakistan**
Client: **Ministry of Foreign Affairs, KSA**

Scope Of Work:

- Total covered area = 2709.70 M²
- Total area of site = 13342.04 M²
- Ancillary buildings = 1189.40 M²
- Nos. of floors = 4
- Rendered finish
- Frame structure with one way joists
- Masonry cavity walls with polyethylene insulation
- Aluminium glazed windows
- Backup power generator
- Central air conditioning system
- Direct fired absorption chillers
- CCTV system
- Fire alarm system
- HVAC system
- Complete landscaping works



D-Point Car Parking Plaza

Project Name: **D-Point Car Parking Plaza**
Location: **Lahore, Pakistan**
Client: **Lahore Development Authority**

Scope Of Work:

Construction of entire structure including:

- 8 floors above ground
- 3 basements with piling
- Waffled roof with drop panels
- Shopping arcade
- Plumbing works
- Electrical works
- Fire fighting system
- HVAC system

Jacaranda Family Club

Project Name: **Jacaranda Family Club**
Location: **DHA Phase II, Islamabad**
Client: **Defence Housing Authority, Islamabad**

Scope of Work:

- Complete design & construction
- Total floor area = 25,000 S. ft.
- Truss roof
- Total concrete = 15,000 M³
- Total re-steel = 2,000 ton
- Piles
- Total land area = 20,000 S. ft.
- Swimming pool
- Landscaping



Service Area on Motorway (M2)

Project Name: **Services Areas On Motorway (M2)**

Location: **Lahore - Islamabad, Pakistan**

Client: **National Highway Authority**

Scope Of Work:

The Scope Involved the design and construction of:

- Shopping arcades
- Restaurants
- Mosques
- Electrical sub-stations
- Plumbing & electrical works
- Internal & external development works etc.



Stock Exchange Tower

Project Name: **Stock Exchange Tower**

Location: **Islamabad, Pakistan**

Client: **Islamabad Stock Exchange**

Scope Of Work:

Civil, electrical and mechanical work with following features:

- Total land area = 500,000 S. ft.
- Total constructed area = 500,000 S. ft.
- Height of structure = 250 ft.
- No of floors 3B + G + 21 storeys
- Area of each floor = 20,000 S. ft.
- Total concrete = 35,000 M
- Total re-steel = 3,500 ton
- 750 piles of 760 mm dia
- Fire fighting system
- HVAC system



DHA Office Phase - I

Project Name: **DHA Office Phase - I**
Location: **Islamabad, Pakistan**
Client: **DHA, Islamabad**

Scope of Work:

- Complete design
- Total floor area = 125,000 S. ft.
- Concrete works
- Steel reinforcement
- 1 Basement, ground floor + 1 upper ground floor
- Frame concrete structure
- Total land area = 50,000 S. ft.
- Complete electrical, plumbing works
- Complete HVAC works



Middle & Low Cost Housing Scheme

Project Name: **Middle & Low Cost Housing Scheme**
Location: **Samudra, Malaysia**
Client: **Samudra, Malaysia SDN, BHD**

Scope Of Work:

- Total number of housing units = 580 (medium cost) + 400 (low cost)
- Complete civil works
- Internal & external finishes
- Complete electromechanical jobs
- Complete infrastructure of the scheme



300 Bed Saudi German Hospital

Project Name: **300 Bed Saudi German Hospital**
Location: **San'a, Yemen**
Client: **Saudi German Hospital Group**

Scope Of Work:

- Total land area = 280,000 S. ft.
- Total constructed area = 120,000 S. ft.
- Height of structure = 80 ft.
- Total floor area = 100,000 ft.
- No. of floors = 5
- Area of each floor = 20,000 S. ft.
- Total concrete = 25,000 M³
- Total re-steel = 2,500 ton
- HVAC of electromechanical works.
- Fire fighting system

300 Bed Saudi German Hospital

Project Name: **300 Bed Saudi German Hospital**
Location: **Dubai, U.A.E**
Client: **Saudi German Hospital Group**

Scope of Work:

- Complete construction works and external finishes
- Electrical works
- Mechanical works
- HVAC works
- LV communication system e.g. SIS, CCTV, MATV
- Nurse call system
- Computer network
- Fire fighting system
- Structural glazing – 30,000 S. ft.



BUILDINGS

400 Bed Saudi German Hospital

Project Name: **400 Bed Saudi German Hospital**
Location: **ABHA, Saudi Arabia**
Client: **Saudi German Hospital Group**

Scope Of Work:

- Total land area = 295,000 S. ft.
- Total constructed area = 127,000 S. ft.
- Height of structure = 100 ft.
- Total floor area = 100,000 S. ft.
- No of floors = 6
- Area of each floor = 20,000 S. ft.
- Concrete works
- HVAC system
- Fire fighting system

300 Bed Saudi German Hospital

Project Name: **300 Bed Saudi German Hospital**
Location: **Madina, Saudi Arabia**
Client: **Saudi German Hospital Group**

Scope Of Work:

- Total land area = 285,000 S. ft.
- Total constructed area = 126,000 S. ft.
- Height of structure = 80 ft.
- Total floor area = 100,000 S. ft.
- No. of floors = 5
- Area of each floor = 20,000 S. ft.
- Concrete works
- Raft type foundation
- HVAC system
- Fire fighting system



300 Bed Saudi German Hospital

Project Name: **300 Bed Saudi German Hospital**
Location: **Al-Riyadh, Saudi Arabia**
Client: **Saudi German Hospital**

Scope Of Work:

- Total land area = 290,000 S. ft.
- Total constructed area = 125,000 S. ft.
- Height of structure = 80 ft.
- Total floor area = 100,000 S. ft.
- No. of floors = 5
- Area of each floor = 20,000 S. ft.
- Concrete works
- HVAC system
- Fire fighting system

Saudi German Hospital Medical College

Project Name: **Saudi German Hospital
Medical College**
Location: **Jedha, Saudi Arabia**
Client: **Saudi German Hospital Group**

Scope Of Work:

- Total land area = 300,000 S. ft.
- Total constructed area = 150,000 S. ft.
- Height of structure = 80 ft.
- Total floor area = 100,000 S. ft.
- No. of floors = 4
- Area of each floor = 25,000 S. ft.
- Concrete works
- HVAC and electromechanical jobs
- Fire fighting system



Bahria Heights (Ground Floor & 9 Story)

Project: **Bahria Heights (Ground + 9 Story)**

Location: **Karachi**

Client: **Bahria Town Pvt. Ltd.**



Scope of Work:

- Grey Structure of 04 Towers of Bahria Heights (Ground Floor + 09 Stories), Underground Water Tank, Overhead Water Tank, All conduit works
- Total Covered Area = 125,800 m²
- Concrete = 81,600 m³
- Steel Reinforcement = 9,150 Tons
- Block Water = 181,000 m²
- Cement Plaster = 810,200 m²



Multan Metro Bus Project (Package-3)

Project: **Multan Metro Bus Project (Package-3)**

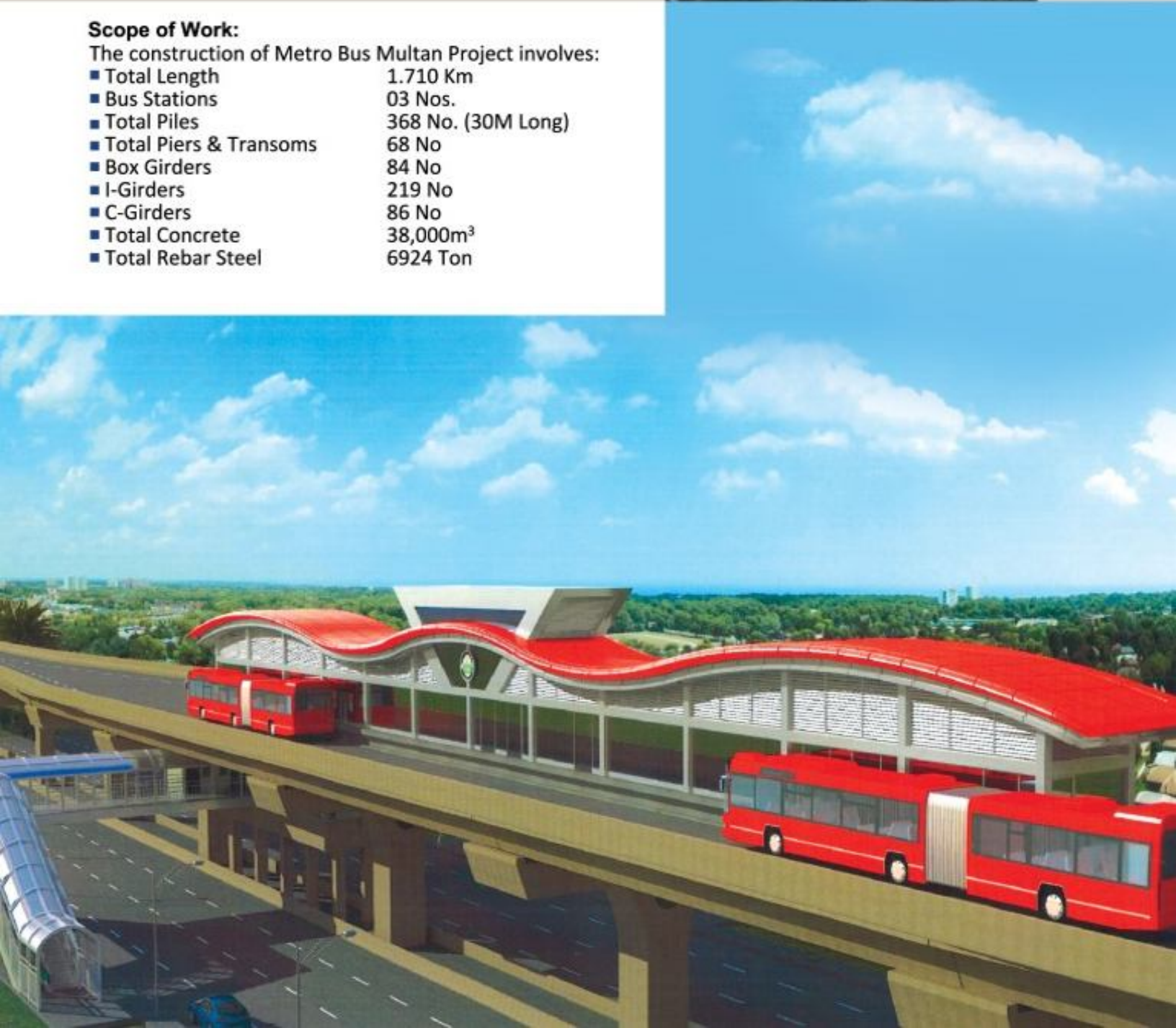
Location: **Fish Market to Chungi No.14, Multan**

Client: **Multan Development Authority (MDA)**

Scope of Work:

The construction of Metro Bus Multan Project involves:

■ Total Length	1.710 Km
■ Bus Stations	03 Nos.
■ Total Piles	368 No. (30M Long)
■ Total Piers & Transoms	68 No
■ Box Girders	84 No
■ I-Girders	219 No
■ C-Girders	86 No
■ Total Concrete	38,000m ³
■ Total Rebar Steel	6924 Ton



BUILDINGS



Roads, Housing & Infrastructure

“Covering the Distance with Precision”

HRL is proud to be part of group working for the improvement & betterment of infrastructure with roads on top priority. The design & construction of national highways and broad roads/avenues in housing schemes has given a new meaning to commuting.



ROADS, HOUSING & INFRASTRUCTURE

DHA Phase - II

Project Name: **Defence Housing Authority Phase – II**

Location: **(Rawat) Islamabad, Pakistan**

Client: **W&R Directorate, Pakistan Army**

Scope Of Work:

Complete design and construction of infrastructure to include:

- Gross area = 17,000 kanals (850 hectares)
- Residential area = 8,080 kanals (404 hectares)
- Public buildings and services areas = 1,650 kanals
- No. of plots = 8,074
- Total earthwork = 6,226,423 M³
- Total length of roads = 127 km. (476.12 acre)
- Walkways = 272 kms.
- Storm water drainage = 24 km.
- Retaining wall = 12 km.
- O/H water tanks = 11 Nos. (100,000 gallons each)
- Tube wells = 30 Nos. (0.35 cusecs each)
- U/G water tanks = 10 Nos. (200,000 gallons each)
- Waste water treatment plants = 2 Nos.
(4.0 mgd & 3.0 mgd)
- International pumping station = 2 Nos. (0.5 mgd each)
- Sewerage pipe RCC (6"Ø ~ 27"Ø) = 54,117 Nos.
- Tuff tiles (12"x12") = 3,165,552 Nos.
- Kerb stones & edge stones = 1,392,508 Nos.
- Installation of street light poles
- Complete design, supply and installation of underground electrification works



DHA Phase - II Extension

Project Name: **Defence Housing Authority Phase -II Extension**
Location: **(Rawat) Islamabad, Pakistan**
Client: **W&R Directorate, Pakistan Army**



Scope Of Work:

- Gross area = 8,000 kanals
- Residential area = 4,700 kanals
- Public buildings and services areas = 1,000 kanals
- No. of plots = 5,000
- Total earthworks = 1,275,4750 M³
- Total length of roads = 67 km.
- Walkways = 134 km.
- Storm water drainage = 6 km.
- O/H water tanks = 4 Nos. (100,000 gallons each)
- U/G water tanks = 4 Nos. (200,000 gallons each)
- Tube wells = 7 Nos. (0.35 cusecs each)
- Waste water treatment plants = 1 Nos. (4.0 mgd)
- Internal pumping station = 1 Nos. (0.5 mgd)
- Sewerage pipe RCC (6"Ø ~ 24"Ø) = 90,000 meters
- Tuff tiles (12"x12") = 5,50,000 Nos.
- Kerb stones & edge stones = 1,000,000 Nos.
- Installation of street light poles
- Complete design, supply and installation of underground electrification works
- Supply and laying of underground electric cables 120mm (3-Core, 4-Core) in trenches



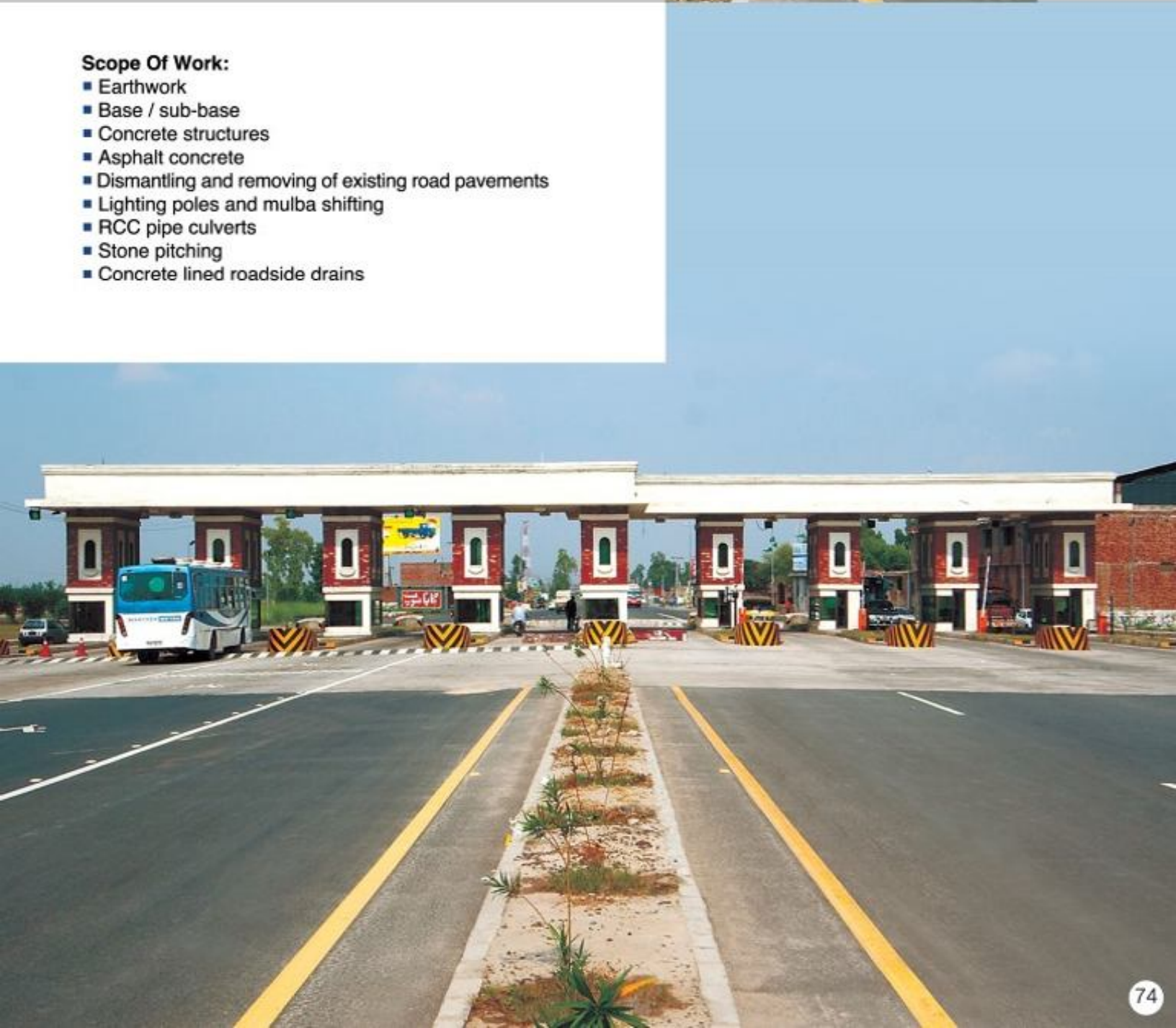
ROADS, HOUSING & INFRASTRUCTURE

Lahore-Sheikhupura- Faisalabad Dual Carriageway (120 km.)

Project Name: **Lahore –Sheikhupura – Faisalabad
Dual Carriageway, BOT-2 Project**
Location: **Khurrianwala – Faisalabad**
Client: **LAFCO**

Scope Of Work:

- Earthwork
- Base / sub-base
- Concrete structures
- Asphalt concrete
- Dismantling and removing of existing road pavements
- Lighting poles and mulba shifting
- RCC pipe culverts
- Stone pitching
- Concrete lined roadside drains



ROADS, HOUSING & INFRASTRUCTURE

Lahore Ring Road (Package-3)

Project: **Lahore Ring Road (Package-3)**

Location: **Niaza Chowk to Mehmood Booti, Lahore**

Client: **Chief Engineer (North) Punjab Highway Department. Lahore**

Scope of Work:

The activities comprise of:

- Complete Civil Works, Clearing & Grubbing 303,200m,
- Removal of Trees, Compaction of Natural Ground 303,200m,
- Excavate unsuitable or surplus common material 387,300m,
- Structural excavation in common material 153,100m,
- Granular back fill 13,100m, Granular back fill with sand 17,000m,
- Common back fill 17,400m, Select Fill material 3,500m,
- Formation of embankment from roadway excavation in common material 40,412m,
- Formation of embankment from borrow excavation in common material 1,290,000m,
- Formation of embankment from structural excavation in common material 65,500m,
- Sub grade preparation in earth cut 107,100m,
- Electrification.

Motorway (Islamabad to Peshawar)

Project Name: **Motorway**

(**Islamabad To Peshawar**)

Location: **Islamabad to Peshawar**

Client: **National Highway Authority (NHA)**

Scope Of Work:

- Earthwork = 720,000 M
- Pile driving & testing at multiple locations
- Structure work (0~35 km.)
- Multispan = 6 Nos. bridges at multiple locations
- Multispan = 5 Nos. flyovers at multiple locations
- Road structure work = 7 km.
- Asphalt work = 30,000 tons
- Fence & lane marking works



ROADS, HOUSING & INFRASTRUCTURE

Bahria Town Sector E

Project Name: **Bahria Town Sector-E**
Location: **Bahria Town, Lahore.**
Client: **Bahria Town (Pvt.) Limited**

Scope of Work:

Complete infrastructure development

- Gross area 4,000 kanals including road works,
- Sewerage works including sewerage disposal pit,
- Water supply works including overhead
- Water tanks
- Tube well and sleeves for (electricity works including street lighting, Sui-Gas network and communication network at road X-ings)
- Boundary wall,
- Main entry gate,
- Landscaping.

Bahria Town, Phase - 8

Project Name: **Bahria Town, Phase - 8**
Location: **Rawalpindi, Pakistan**
Client: **Bahria Town Pvt. Ltd.**

Scope of Work:

- Gross area = 19,600 kanals (1127 hector)
- No. of plots = 5,400 kanals
- Total length of roads = 125 km., walkways = 245 km.
- O/H water tanks = 12 Nos. (100,000 gallons each), storm water drainage = 20 km., U/G water tanks = 12 Nos. (200,000 gallons each), tube wells = 49 Nos. (0.35 cusecs each), water supply system = 132 km., sewerage system = 137 km.
- Retaining walls (SM) = 6 km.
- Total earthworks = 30.81 million cum
- LT DB = 3,060 Nos, street light poles (6 M, 8 M & 12 M) = 2735 Nos, 220 KV grid station



ROADS, HOUSING & INFRASTRUCTURE

Kohat Tunnel Approach Road

Project Name: **Kohat Tunnel
Approach Road**

Location: **Kohat, Pakistan**

Client: **National Highway Authority (NHA)**

Scope of Work:

- Road in hilly area = 7 km.
- Rock excavation by blasting = 400,000 m³
- Road embankment in common soil = 156,000 m³
- Road embankment in rock soil = 418,000 m³
- RCC pipe culverts = 270 m
- Stone pitching = 29,000 m²
- Conc. lined roadside drains = 8,000 m



RYK-TMP Dual Carriageway (N-5)

Project Name: **RYK-TMP Dual
Carriageway (N-5)**

Location: **Rahim Yar Khan, Pakistan**

Client: **National Highway Authority (NHA)**

Scope of Work:

- Earthwork = 187,584 M³ (13 km.)
- Sub-base / base = 266,497 M³
- Asphaltic concrete = 139,642 ton
- Structure = 4,971 M³, DST 50,371 M²



ROADS, HOUSING & INFRASTRUCTURE

Faisalabad-Sargodha & Faisalabad-Jhang Road

Project Name: **Faisalabad-Sargodha & Faisalabad-Jhang Road**
Location: **Faisalabad, Pakistan**
Client: **Faisalabad Development Authority**

Scope of Work:

- Total length of road = 24 km. (each way)
- Earth work, base course 12" (Sargodha)
- Sub-base 8", asphalt concrete, lighting poles
- Concrete / brick work and miscellaneous work.

Sawan Oil Gas Field Access Road

Project Name: **Sawan Oil Gas Field Access Road**
Location: **Khairpur, Sindh, Pakistan**
Client: **Clough Engineering, Australia**

Scope of Work:

- Total length of road = 23 km.
- Embankment in cut = 118,000 M³
- Sub-grade preparation = 343,000 M²
- Gravel sub-base (150 mm) = 314,00 M²
- Gravel base-course (150 mm) = 285,000 M²
- Prime coat = 185,000 M²
- 50 mm dense graded AC = 1418,500 M²
- Pavement marking = 23,500 m
- RCC pipe culverts = 670 m



ROADS, HOUSING & INFRASTRUCTURE

DHA Phase-I Ext.

Project Name: **DHA Phase - I Ext.**

Location: **Islamabad, Pakistan**

Client: **DHA, Islamabad**

Scope of Work:

- Complete infrastructure development works, construction of main link road, construction of Interchange
- Total area = 1644 kanals (95 hectares)
- Total plots (1K) = 780 Nos, length of roads = 18.42 km., earthwork for roads 4 Million M, Length of footpaths = 33.59 km., sewerage network = 13 km., water supply network = 10 km., water pipe = 43 km., street light cable network = 23.3 km., street light poles = 144 Nos, concrete: 6,000 M, asphalt: 140,000 ton, kerb stone = 52 km.

Grace Land Housing

Project Name: **Grace Land Housing**

Location: **Islamabad, Pakistan**

Client: **Grace Land (Pvt.) Ltd.**

Scope of Work:

- Total area = 4000 kanals (230 hectares), residential plots different sizes = 2124 Nos, length of roads = 34.34 km., length of foot paths = 2.56 km., length of kerb stone = 5.13 km., sewerage network = 31.12 km., water supply network = 52 km., OH / UG tanks = 4 nos, storm water drain = 3.13 km., sewerage treatment plant = 1 no. sui gas network and underground electrification works



ROADS, HOUSING & INFRASTRUCTURE

CDECHS

Project Name: **Cabinet Division Employees, Cooperative Housing Scheme**
Location: **Islamabad, Pakistan**
Client: **Cabinet Division Employees, Cooperative Housing Society**

Scope of Work:

- Complete infrastructure development works:
- Total Area = 4500 kanals (258 hectares), residential plots different sizes = 2937 Nos, earth work for roads = 1 million M, length of roads = 49.9 km., length of footpaths = 25.5 km., length of kerb stone = 35.5 km., sewerage network = 34.6 km., water supply network = 52 km., OH / UG tanks = 6 Nos, sewerage treatment plant = 1 No, sui gas network and underground electrification works

Bahria Town Springs

Project Name: **Bahria Town Springs**
Location: **Islamabad, Pakistan**
Client: **Bahria Town Pvt. Ltd.**

Scope of Work:

- Total area = 1312 kanals (76 hectares)
- Earth work of roads / plots = 2.17 million cum
- Length of roads = 11 km., Length of kerb stones = 21 km., length of footpaths = 21 km.,
- Sewerage system = 11 km.,
- Water supply system = 13 km., overhead water tank = 1 No, underground water tank = 1 No
- Street light poles = 229 Nos



ROADS, HOUSING & INFRASTRUCTURE

Bahria-Garden City

Project Name: **Bahria - Garden City**
Location: **Rawalpindi, Pakistan**
Client: **Bahria Town Pvt. Ltd.**

Scope of Work:

- Total area = 3374 kanals (194 hectares)
- Earth work of roads / plots = 4.21 million cum
- Length of road = 21 km., length of kerb stone = 35 km., length of footpaths = 27 km., storm water drain 2 km
- Sewerage system = 37 km., water supply network = 17 km., overhead water tanks = 2 Nos, underground tanks = 2 Nos
- Boundry wall = 7 km., street light poles = 280 Nos

Bahria-Paradise

Project Name: **Bahria - Paradise**
Location: **Rawalpindi, Pakistan**
Client: **Bahria Town Pvt. Ltd.**

Scope of Work:

- Earthworks 0.61 million cum, roads construction 2.25 km., length of kerb stone = 4.50 km., length of footpath = 4.50 km.
- Walkways, storm water drainage, retaining wall, international pumping station, sewerage pipe RCC, installation of street light poles
- U/G electrification
- U/G & O/H water tanks.
- Water supply system, sui gas system



ROADS, HOUSING & INFRASTRUCTURE

Bahria-Expressway

Project Name: **Bharia - Expressway**
Location: **Rawalpindi, Pakistan**
Client: **Bahria Town Pvt. Ltd.**

Scope of Work:

- Earthwork of roads / plots = 1.00 million cum
- Length of road works = 4.45 km.
- Length of footpath = 6.85 km.
- Length of kerb stones = 13.81 km.
- Monuments = 1 No.
- Entry gate = 1 No.
- Storm water drain
- Protection works
- Street lighting services

Tricon Village

Project Name: **Tricon Village**
Location: **Lahore, Pakistan**
Client: **Tricon Pvt. Ltd.**

Scope of Work:

- Construction of 480 houses
- Road construction
- Sewerage system, water supply system
- Electrification work
- Drainage system, tubewells
- Overhead water tank
- Walkways, landscaping



ROADS, HOUSING & INFRASTRUCTURE

Bahria Town, Sector - C

Project Name: **Bahria Town, Sector - C**
Location: **Bahria Town, Lahore**
Client: **Bahria Town Pvt. Ltd.**

Scope of Work:

- Gross Area 12,000 kanals including residential area, public buildings and services areas, earthworks, construction of internal roads, walkways, storm water drainage
- Water tanks 12 Nos. (200,000 gallons each), tube wells 30 Nos. (0.35 cusecs each), tuff tiles (12"x 12"), kerb stones & edge stones, installation of street light poles
- Complete design, supply and installation of underground electrification works, supply and installation of service boxes, pad mounted transformers, LT/HT switch panel boxes

Lake City (Bella Vista) Phase - I

Project Name: **Lake City (Bella Vista) Phase - I**
Location: **Raiwind Road, Lahore**
Client: **Lake City Holdings Pvt. Ltd.**

Scope of Work:

- Gross area = 9,000 kanals including residential area, public buildings and services areas, earthwork, internal roads, walkways, storm water drainage, retaining wall, supply & installation of street light poles, laying of underground electrical cables 120mm (3-core, 4-core) in trenches, supply and installation of service boxes
- O/H & U/G water tanks, tube wells, sewerage pipe RCC (6"Ø ~ 27"Ø)



ROADS, HOUSING & INFRASTRUCTURE



Our Clients & Joint Ventures

HRL is busy in business area with domestic and international players either as a partner or main contactors. the repetition of orders from these clients is a touchstone of their faith and confidence in us. After all the single most important element to us is our “CLIENT”



ALSTOM



DAEWOO



Klöckner & co



NIKKI



PAYVAL BANK LIMITED



بنك بيفال



KAPCO



FOUNDATION UNIVERSITY

Mott MacDonald



LAKE CITY

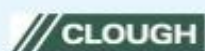
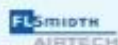
FFC

PLDC



中国中铁一局集团有限公司
CHINA RAILWAY FIRST GROUP CO., LTD.

哈电集团



PAKISTAN

Head Office:

Habib Rafiq (Pvt.) Limited
6-k, Block - H, Gulberg - II,
Lahore - Pakistan.
Tel: (+92-42) 35711411, 35711716, 35877547
Fax: (+92-42) 35710890, 35762274
E-mail: hrl@habibrafiq.com
URL: www.habibrafiq.com

Technical Office:

Habib Rafiq (Pvt.) Limited
13-Block-H, Gulberg-II, Lahore-Pakistan
Tel: (+92-42) 35750602, 35711411, 35711716
Fax: (+92-42) 35762274, 35757247, 35751593
E-mail: hrl@habibrafiq.com
URL: www.habibrafiq.com

Regional Corporate Offices:

Habib Rafiq (Pvt.) Limited House No. 12, Street No. 40, F-7/1, Islamabad - Pakistan. Tel: (+92-51) 2651931-32 Fax: (+92-51) 2651930 E-mail: hrlisb@gmail.com URL: www.habibrafiq.com	Habib Rafiq (Pvt.) Limited 80-Nazim-ud-din Road, F-8/4, Islamabad - Pakistan Tel: (+92-51) 2264815-19 Fax: (+92-51) 2257358 E-mail: hrlisb@habibrafiq.com URL: www.habibrafiq.com
--------------------------------------------------------------------------------------------------------------------------------------------------------------------------------------------------------	-----------------------------------------------------------------------------------------------------------------------------------------------------------------------------------------------------

Regional Office:

Habib Rafiq (Pvt.) Limited
Creek Vista at Creek City, DHA Phase VIII,
Near Gulf Club, Karachi - Pakistan
Tel: (+92-21) 35344372-73
Fax: (+92-21) 5344374
E-mail: hrlkhi@habibrafiq.com
URL: www.habibrafiq.com

ABROAD

Saudia Office:

Habib Rafiq Co. (Pvt.) Limited
P. O. Box # 220135, 3rd Floor, Suite # 405,
Al-Ameera Building, Computer Market,
Olaya Street, Riyadh, 11311,
Kingdom of Saudi Arabia.
Tel: (+966-1) 4624571, 4624113
Fax: (+966-1) 4624571 Ext. 408
E-mail: hrl-ksa@habibrafiq.com
URL: www.habibrafiq.com

UAE Offices:

Habib Rafiq Limited
UBL Building, 1st Floor,
Hamdan Street. Abu Dhabi - UAE.
E-mail: hrluae@habibrafiq.com
URL: www.habibrafiq.com

Habib Rafiq Limited
CITADEL Tower# 2208
Business bay Dubai, UAE.
E-mail: hrluae@habibrafiq.com
URL: www.habibrafiq.com

